



United Nations Development Assistance Framework for Bangladesh 2012 - 2016



Table of Contents

1. Executive Summary.....	02
2. Preface.....	04
3. Introduction.....	06
4. Coordination, Implementation and Monitoring Mechanisms.....	12
5. UNDAF Narrative.....	14
6. Additional Actions to Support the UNDAF.....	29
7. Estimated Resource Requirement.....	31
8. Monitoring and Evaluation.....	32
9. Annex I: UNDAF Results Matrices.....	34
10. Annex II: Glossary.....	63

Executive Summary

The overall goal of the UN System in Bangladesh is to support the Government of Bangladesh's efforts to apply the principles of the Millennium Declaration and to achieve the Millennium Development Goals (MDGs) with equity. This will be realized by ensuring alignment between the MDGs, national development priorities and the UN System's strategic areas of cooperation as determined by its comparative advantage. The UNDAF is the UN System's coherent and collective response for addressing inequalities in Bangladesh. It elaborates what and how results will be achieved over the next five years for the people of Bangladesh, particularly for the most vulnerable, deprived and marginalized.

The UNDAF 2012-2016 identifies the reduction of socio-economic inequalities as the main driver of positive change. In Bangladesh, as in many other countries, economic growth is accompanied by an increase in inequalities, in terms of both income and access to services. Disparities in the achievement of the MDGs between the best and worst performing districts are increasing. Substantial evidence shows that mitigating inequalities accelerates poverty reduction and sustains economic growth. The key focus therefore, is the acceleration of MDG achievements in the worst performing and most vulnerable geographic areas, in urban slums and within the most vulnerable segments of the population.

The UNDAF 2012-2016 is anchored around national priorities as stated in the Government's *Outline Perspective Plan of Bangladesh 2010-2021 (Making Vision 2021 a Reality)*, the emerging *Sixth Five Year National Development Plan*, and is based on the outcome of *The Millennium Development Goals: Bangladesh Progress Report 2009*, together with the extensive consultative process that preceded its publication. These documents together represent the core of UN country analysis, replacing the need for a separate Common Country Assessment (CCA).

The UNDAF 2012-2016 is the product of an extensive and ongoing consultative process with Government, international and national non-governmental organizations, donors, the private sector, and the wider UN System, including the non-resident agencies.

The UNDAF 2012-2016 combines the UN System's normative and operational work by making *human development with equity* the central unifying theme but also defining specific strategies and tangible outcomes, outputs and indicators within a human rights-based approach and results-based planning and management. The framework builds on participatory and inclusive management, coordination and implementation mechanisms and ensures a dynamic and active programming process through the establishment of an indicative rolling work plan, updated and monitored annually, with the Government and relevant development partners.

The UN System established a clear UNDAF management and accountability structure by identifying a UN Lead Agency for each area of cooperation, responsible for convening, coordinating, monitoring and evaluating the UNDAF with the support of participating agencies and implementing partners. The seven UNDAF Pillars and the respective UN Lead Agencies are as follows:

1. **Democratic Governance and Human Rights (UNDP)**
2. **Pro-poor Growth with Equity (UNDP)**
3. **Social Services for Human Development (UNICEF)**
4. **Food Security and Nutrition (WFP)**
5. **Climate Change, Environment, Disaster Risk Reduction and Response (UNDP)**
6. **Pro-poor Urban Development (UNDP)**
7. **Gender Equality and Women's Advancement (UNFPA)**

These seven interrelated and mutually reinforcing focus areas are framed by the overarching imperative of creating for all Bangladeshi citizens, more equitable access to knowledge, skills, livelihoods, employment, justice, social services, food security, nutrition, financial services and social protection. Poor communities must be able to participate more meaningfully in democratic processes and be able to access the

opportunities afforded by accelerated economic growth. The living conditions of the urban poor must be improved and opportunities for their livelihoods increased. Those populations which are vulnerable to climate change and natural disasters must build resilience and the capacity to adapt. There can be no equity without gender equality. Women must participate fully in wage employment and income-generating activities and their social and institutional vulnerabilities reduced.

These seven *pillars* form the central thrust and structure of the UNDAF. Together they offer a robust and bespoke development approach that links human rights with twelve *SMART* (Specific, Measurable, Achievable Relevant and Time bound) outcome results targeted for achievement by 2016. The structure and order of outcomes and outputs within the UNDAF results matrices complements national monitoring and evaluation by linking back to MDG progress reporting and national planning as part of the wider Bangladesh appraisal framework along with Government and development partners' Joint Cooperation Strategy (JCS).

Five core strategies underpin the full range of results the UNDAF sets out to achieve:

- 1) High level advocacy - will be used to promote and protect the core values and principles for which the UN stands, such as human rights, gender equality and environmental sustainability. Evidence-based advocacy will address the upstream focus of creating, or strengthening the policy, legal and budgetary environment without which sustainable change cannot occur.
- 2) Capacity development of individuals - institutions and society at large, especially in empowering the poor, cuts across the mandate of all UN agencies, funds and programmes and is the bedrock upon which the UNDAF is constructed.
- 3) Systems strengthening - whereas the framework seeks to address some of the root causes of deprivation, such as gender inequalities and social inequities, strengthening service delivery systems pitches interventions at the level of causality. Thus modeling effective service delivery systems and then taking them to scale, is an important part of this strategy.
- 4) Partnership-building, participation, and raising the voice of civil society - as recognized in MDG 8, this is critical in ensuring an inclusive development process and optimizing the likelihood of success.
- 5) Targeting interventions on geographic regions, based on districts lagging behind on MDG achievement, and vulnerability mapping determined by key social indicators. The result of this is a very clear UN System focus on twenty districts where an area-based approach will be used, and on key groups, to provide convergence synergies, focus limited resources, show measurable results for the most vulnerable and deprived and open the way to joint UN programming.

Similarly, the specific targeting of thirty cities or towns, where three million of the poorest people live, is a strategy for reducing poverty and ensuring more equitable access by the urban poor to skills, income, resources, financial and social services, and social protection. The identification of pro-poor urban development as a separate Pillar within the UNDAF is the result of consensus within the UNCT that reaching the urban poor requires unequivocal and focused programming as part of the equity agenda. Likewise, gender equality and women's advancement needed its own high-level profile and distinct set of outcomes even though gender-sensitive programming characterizes the UNDAF as a whole.

Monitoring of the UNDAF will take the form of studies and surveys, some sponsored by UN agencies and others by official agencies, principally, the Bangladesh Bureau of Statistics (BBS). Government will monitor progress against UNDAF outcomes and outputs through its health and education information systems, and via the *Bangladesh Info* facility. A series of evaluations are planned covering violence against women and food and nutrition by the UN specialised agencies, and country programme mid-term and end-of-cycle evaluations.

The resource requirement for implementing the UNDAF is currently estimated at approximately US\$1.8 billion over the five-year period. Reaching this figure will entail utilizing agency-specific funds efficiently and effectively, and also a comprehensive and coordinated joint UN resource mobilization strategy.

Preface

Heads of UN Agencies pledge to work closely with the Government of the People's Republic of Bangladesh and our development partners to support the fulfilment of the country's development priorities. These are defined by the emerging National Sixth Five Year Plan and the commitments made under the Millennium Declaration, and specifically, to achieving the Millennium Development Goals (MDGs).

Our collective aspiration as members of the UN Country Team is to greater collaboration, greater focus and coherence and to enhance the impact of our support as we seek to improve the quality of life for all, and in particular of the poorest and most vulnerable groups. As such, we affirm our commitment to attain the outcomes described in this United Nations Development Assistance Framework 2012-2016 (UNDAF), utilizing our resources efficiently and effectively for the promotion of human development, equity and human rights in Bangladesh.

The United Nations Development Assistance Framework (UNDAF) sets out the overarching goal, strategic plan and the broad interventions to be adopted by the United Nations agencies in Bangladesh for the period 2012 to 2016. It represents a mapping of the UN System's comparative advantage to the findings of a comprehensive MDG-based assessment of development performance and the priorities articulated by the Government of Bangladesh (GoB) in its *Outline Perspective Plan (OPP)* and the emerging *Sixth Five Year Plan (SFYP)*.



M. Musharraf Hossain Bhuiyan

Secretary, Economic Relations Division,
Government of Bangladesh (GoB)




Neal Walker

UN Resident Coordinator¹
and UNDP Resident Representative

Dhaka, 1 June 2011

¹As UN Resident Coordinator (RC) tasked with representing and ensuring the interests of the UN System in Bangladesh, the UN RC signs the UNDAF on behalf of the Non-Resident UN Agencies (UNCDF, UNEP, UNIDO, UNODC, UNHABITAT, IAEA, IFAD, OHCHR, UNCTAD and UNOPS).



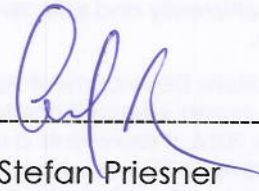
Ciro Fiorillo
FAO Representative ad interim



Andre Bogui
ILO Country Director



Rabab Fatima
IOM Regional Representative for
South Asia



Stefan Priesner
UNDP Country Director



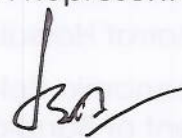
Derek Elias
UNESCO Representative




Arthur Erken
UNFPA Representative



Craig Sanders
UNHCR Representative



Salil Panakadan
UNAIDS Country Coordinator



Carel de Rooy
UNICEF Representative



Christa Räder
WFP Representative



Arun Bhadra Thapa
WHO Acting Representative

Introduction

This document is comprised of three main sections. The first section provides an introductory narrative summarizing the development challenges identified by the Bangladesh MDG Assessment 2009/2010, along with an outline of the UNDAF development process and the delivery modalities. The second section sets out seven distinct *Intervention Pillars*, around which UN System interventions will be designed and implemented. The third and final section, introduces a corresponding set of matrices summarizing intervention proposals and a detailed results framework for each of the pillars.

1. *Situation Analysis : Findings of the Bangladesh MDG Assessment 2009-2010*

During 2009 and 2010 a comprehensive joint MDG assessment exercise was undertaken by the UN System and the Government's Planning Commission, in close consultation with a range of stakeholders. This comprised both an evaluation of performance and a costing of the inputs required to ensure the achievement of the MDGs by 2015. This exercise was rigorously undertaken and tailored to Bangladesh's development context. Building on past UN-supported work to establish a national MDG framework, the assessment examined each of the goals and reviewed the quality of governance and human rights under the mantle of the Millennium Declaration and an appraisal of development partnerships under MDG 8. As such, the exercise replaced the need for a Common Country Assessment (CCA) and serves as the primary reference for framing UNDAF objectives and UN System interventions.

A number of macro-level themes were apparent. Foremost, the assessment revealed that solid progress had generally been made towards achieving the MDG targets by the 2015 deadline. Particularly noteworthy was Bangladesh's performance in MDG 4 on child mortality, MDG 6 on disease control and the poverty targets under MDG 1. However, some critically lagging areas were identified, most notably: MDG 5 on maternal mortality (however, it is important to note that recent data shows a marked improvement sufficient to bring this goal back on track); and MDG 7 on environmental sustainability. Variations in performance across groups and regions, and therefore, growing inequalities in MDG outcomes, were also significant findings.

This pattern of change mirrors wider socio-economic trends, which show generally progressive developments alongside significant divergences. Within the economy, although annual growth rates have been strong at approximately 6 per cent and poverty has been falling consistently over the past twenty years, inequality - particularly between regions - has worsened. A similarly but more nuanced picture, emerges from multi-dimensional measures of welfare. The Human Development Index (HDI) has shown impressive gains - a rise of almost 9 per cent between on 2005 and 2010, and a striking 81 per cent over the comparable 1980 value. Again however, the inequality adjusted HDI is some 29 per cent below the headline index. Moreover, the Multi-dimensional Poverty index (MPI), a measure of non-income poverty records a sizeable headcount rate of 57.8 per cent for 2010. This is also well above the current income poverty level of 40 per cent (based on 2005 data).

The following provides a more detailed summary of progress and the key challenges within the individual MDG areas:

- *Millennium Declaration: Democratic Governance and Human Rights:* The assessment revealed that good progress has been made in democratic governance including public administration reform. Gains were particularly strong in the areas of electoral reform and the overall accountability of the public sector. Despite this progress, major challenges remain. A core, underlying challenge is the deteriorating quality of what can be referred to as the *democratic space*. This in turn, has driven the deeply rooted confrontational character of politics. Access to justice and ongoing human rights concerns were identified as specific weaknesses. Institutional difficulties also persist, including an archaic civil service and over-centralization of political power and financial resources (only 3 per cent of total expenditures are delivered via autonomous local governments). Women's participation in the political process is also a major cause for concern.
- *MDG 1: Eradicate Extreme Poverty and Hunger:* The analysis shows that Bangladesh is on track to achieving the primary target of halving the poverty rate by 2015 (the national headcount fell from 48.6 per cent to 40 per cent between 2000 and 2005). However, this strong performance has been accompanied by weaker nutritional outcomes and rising regional disparities. A defining feature has also been the persistence of pockets of extreme poverty and deprivation in spite of a growing economy. This is paralleled by the generally negative trajectory of income inequality. Although the picture remains complex in relation to the size distribution (a static Gini coefficient alongside a worsening Theil Index for consumption data), spatial inequality is unambiguously worse (the spatial component doubled between 2000 and 2005). Additionally, the MDG targets for employment,

including for women and young people, are off track (the latest data show a labour force participation rate of 56 per cent, and women's participation at strikingly low at 29 per cent of the eligible population). This pattern of outcomes signals that the growth process is imbalanced and non-inclusive. Total Growth Elasticity of Poverty (a measure of the responsiveness of the poverty level to growth in national income) recorded a value 0.6 between 2000 and 2005, showing that a 1 per cent increase in output is only reducing the poverty headcount by 0.6 population percentage points per annum. A failure to address these underlying issues will further blunt the impact of future economic growth on poverty levels.

- *MDG 2: Achieve Universal Primary Education:* The MDG 2 assessment revealed a similarly mixed pattern of performance. Although Bangladesh is on track to achieve the primary enrolment target, with the net rate showing progressive improvements in recent years (recorded at 91.9 per cent in 2008), the drop-out rate remains high (with only 54.9 per cent of children staying in school until grade 5). Moreover, achieving full enrolment is likely to be considerably more difficult as the remaining 10 per cent of hard to reach children will require significant inputs. Adult literacy also represents an ongoing challenge. Underpinning this mixed pattern of outcomes are a series of policy and delivery issues – including the quality of education, complex gender relations, inadequate coverage of adolescent and adult literacy programmes and the high opportunity cost of education for poor children – especially for boys and for older girls and boys. An overarching consideration is the political priority afforded to education and its share of budgetary resources.
- *MDG 3: Promote Gender Equality and Empower Women:* Gender relations are complex in Bangladesh. Although the country is on track to achieve key targets of parity in primary and secondary education, the tertiary enrolment ratio has actually declined on that recorded in the base year (0.32 in 2006 versus 0.37 in 1991). Moreover, within the political and economic spheres, performance is somewhat disappointing. The share of non-agricultural wage employment for women improved only marginally to 24.6 per cent in 2008; and women's share of parliamentary seats was still low at 19 per cent of the total in 2009. Women in Bangladesh continue to suffer from a range of disadvantages including early marriage, trafficking, and persistence of the traditional dowry system, psychological and physical violence, and sexual harassment. Meaningful steps towards equality and the empowerment of women will require fundamental social transformation – including major changes in norms and perceptions, the re-distribution of power and the opening up of economic opportunities.
- *MDG 4: Reduce Child Mortality:* Performance in this goal has been exemplary. Bangladesh has recorded a remarkable decline in the under-five and infant mortality rates (146 to 53.8 deaths per 1,000 births, and 92 to 41.3 deaths per 1,000 births between 1991 and 2008 respectively). However, limited progress in reducing neonatal deaths, the high prevalence of under-nutrition and the relative increase in injury as a cause of death remain major challenges. Despite concerns about sustainability, poor implementation of policies, limited technical and managerial manpower, and limited supplies of drugs and commodities, MDG 4 targets are all likely to be met. The granting of a global award to the Honourable Prime Minister by the UN Secretary General in New York has heightened the political priority given to this area.
- *MDG 5: Improve Maternal Health:* Findings from the MDG assessment for MDG 5 are worrisome and a cause for major concern. As per SVRS 2008, the mortality rate had remained static at round 350 deaths per 100,000 births between 2005 and 2008, it was concluded that this goal might not be achieved. However, more recent data (BMMS, 2010) has shown a major improvement to 194 deaths per 100,000 births (a reduction of some 45 per cent). Nevertheless, it remains the case that less than one in four women has access to skilled professional during child birth.
- *MDG 6: Combat HIV/AIDS, Malaria and Other Major Diseases:* Bangladesh is currently on-track to achieve the MDG 6 targets. HIV incidence remains low at less than 0.1 per cent of the adult population, and moreover, knowledge of HIV/AIDS and the rates of condom use among risk groups have improved. Similarly, short and long-term trends show a decline in number of malaria cases and deaths. This is a direct result of major interventions for malaria control. The rate of multidrug-resistant TB, although increasing, remains low and serious epidemiological changes have not emerged. However, challenges do remain, including still inadequate coverage of risk groups, limited technical and managerial capacity, and resource constraints particularly in the disease control agencies.
- *MDG 7: Ensure Environmental Sustainability:* Bangladesh is partially on track on two of the three targets within this goal: integrate sustainable development into policies and protect environmental resources; and secure access to an improved water source. It is lagging on the third: improve conditions facing slum dwellers. The country is likely only to meet three of the ten indicators. MDG performance is hampered by the threat of climate change and chronic population pressures. The underlying causes

are complex and interlocking, and include a lack of mechanisms for the distribution of quality planting materials and an inefficient use of forest resources; limited access to facilitating technologies and weak institutional support and financing dedicated to reducing greenhouse gas emissions; poorly planned urban development; and uncontrolled upstream withdrawal of water and poor water resource management generally. It is also important to emphasize the importance of Bangladesh's vulnerability to environmental and climatic shocks. These threats pose very serious risks to wider MDG achievement, particularly in the coastal belt.

- *MDG 8: Develop a Global Partnership for Development:* Although the share of Official Development Assistance (ODA) in national income has been declining steadily and disbursements have consistently been below commitments, ODA allocations to MDG sectors have grown consistently since the mid 2000s. Bangladesh has adopted an open policy orientation to trade and involvement with international capital markets. Both exports and remittances are now making a very considerable contribution to economic growth and the external balance. However, further engagement is required to secure greater access to export markets, and albeit more cautiously, to international finance.

2. The UNDAF Development Process: Matching MDG Gaps, National Priorities and UN System Comparative Advantage

The MDG assessment marks the beginning of the UNDAF formulation phase, capturing both the closing position of the 2006-2011 cycle and serving as the baseline for the 2012-2016 cycle. In 2010, key challenges and priority areas identified in the assessment were synergized with the seven priorities emerging from the Government's national planning process (as given in the *Outline Perspective Plan for Bangladesh 2010-2021 - Making Vision 2021 a Reality*; and the *Sixth Five Year National Development Plan*). These were specifically:

- Boosting production, income and reducing poverty
- Securing human resource development
- Improving water and sanitation
- Building better energy and other infrastructures
- Realizing gender equality
- Promoting environmental sustainability
- Better governance to defend the rights and tenets of justice

Together, these provide the framework of evidence informing the development of the UNDAF. In addition, the implementation period was specifically realigned with the national planning cycle, and further efforts will be made to synchronize monitoring and evaluation (M&E) efforts. The vehicle for synergizing the priorities was a series of ten MDG National Dialogues undertaken between the UNCT, Government and other partners in the first half of 2010. These were:

1. Millennium Declaration: *Human Rights and Democratic Governance* - led by the Ministry of Law, Justice and Parliamentary Affairs, the Ministry of Establishment and UNDP.
2. MDG 1: *Eradicate Hunger* - led by the Ministry of Food and Disaster Management and WFP.
3. MDG 1: *Eradicate Extreme Poverty*, including urban poverty - led by the Planning Commission and UNDP.
4. MDG 2: *Achieve Universal Primary Education* - led by the Ministry of Primary & Mass Education and UNICEF.
5. MDG 3: *Promote Gender Equality and Empower Women* - led the by Ministry of Women and Children Affairs and UNFPA.
6. MDG health cluster, including MDG 4: *Reduce Child Mortality*, MDG 5: *Improve Maternal Health* and MDG 6: *Combat HIV/AIDS, Malaria and other Diseases* - led by the Ministry of Health and Family Welfare and WHO.
7. MDG 7: *Environment/Climate Change & Disaster Management* - led by the Ministry of Environment and Forestry and UNDP.
8. MDG 7: *Water and Sanitation* - led by the Ministry of Environment and Forestry and UNICEF.

9. MDG 8: *Develop a Global Partnership* - led by ERD and RCO/ UNDP.
10. A special task group examined the challenges posed by *Migration*. This was led by the Ministry of Expatriate's Welfare and Overseas Employment and IOM.

Within these forums, MDG performance and Government priorities were reviewed and discussed with development partners, and national/international NGOs. This culminated in the publication of *the Millennium Development Goals Bangladesh Progress Report 2009*, which was presented at the global September 2010 MDG Review Summit by the Honourable Prime Minister.

The final stage in the UNDAF formulation process included the matching of national and MDG priority areas to the mandate and comparative advantage of the UN System and individual agencies in Bangladesh. In addition, the high level of engagement with UN non-resident agencies, ensured that the UNDAF's formulation was highly inclusive. This spirit of inclusiveness will be maintained in the elaboration of the UNDAF's implementation plan or UNDAF Action Plan process, and will therefore, remain in line with the principles of aid effectiveness.

3. *The Overarching Goal of the UNDAF 2012-2016*

The overarching goal of the United Nations System in Bangladesh is to support the Government and its development partners, with applying the principles of the Millennium Declaration and accelerating the achievement of the Millennium Development Goals with Equity.

Since equity lies at the heart of a human rights based approach to programming and places fairness and justice for all, as the main driver of human development, the issue of equity also informs and shapes the mandate of all UN agencies, funds and programmes and is the central 'theme' under-pinning the new UNDAF. It also offers an opportunity for the UN System to work together to do even more for vulnerable communities, strategically and systematically. There are higher socio-economic rewards linked to reaching the most vulnerable and deprived to break the intergenerational cycle of poverty. Actions aimed at mitigating inequities deliver substantial dividends in terms of accelerated poverty reduction as well as sustained economic growth. There is also a powerful political imperative since equity is the key to maintaining social stability, harmony and progress.

Equity is at the centre of the MDGs both in their formulation, as in MDG 3 on gender equality, and explicit in targets and indicators aimed at securing and monitoring universal coverage of social services. The MDGs by focusing on poverty, malnutrition, universal primary education, child and maternal mortality, the spread of disease, and social and environmental protection, by their very nature, target the poorest of the poor, the marginalized and the most vulnerable individuals, groups and communities. Dimensions of inequity include a lack of income and/or access to services, often framed by geographic location, urban-rural differences, gender and ethnic considerations, and vulnerability brought about by concurrent and interlocking risk factors.

The UNDAF's situation analysis section was prepared based on a comprehensive assessment by Government and the UN, of progress towards the MDGs. These assessments are valuable for measuring overall progress. National averages sometimes mask disparities within districts, between districts, between rural and urban areas and between one group of citizens and another.

There is a growing body of evidence to show that progress towards the MDGs can be accelerated by improving equity, with cost-effective and sustainable outcomes. The United Nations system, through its advocacy and programmatic interventions, is well placed to galvanize and prioritize government efforts and those of its development partners, around a common agenda for inclusiveness, closing gaps and promoting accelerated national progress.

4. *Five Core Strategies of the UNDAF 2012-2016*

Viewed through human development with equity lens, the UN System identified five core, interlinked programmatic strategies that inform and unify its human development thrust over the next five years, and beyond:

- **High-level advocacy** for UN core values, including equity, human rights, gender equality, human security and dignity, and environmental sustainability. Evidence-based advocacy would be used more specifically to influence the policy environment, strengthen legal frameworks and their enforcement, and increase budgetary allocations so that macroeconomic policies, laws and

budgets target deprived populations and facilitate their access to income, services, markets and opportunities.

- **Capacity development at individual, institutional and societal levels**, within central and decentralized structures, lies at the UNDAF's core – a process that aims to unleash, strengthen, create and maintain capacity over time. At the individual level the UNDAF aims to impart skills, competencies, experience and awareness to people, both those who claim rights and those whose obligation it is to fulfil them. Empowering poor communities through community-focused initiatives that allow participation and the creation of demand are key components of effective service delivery. Institutional capacity development addresses issues relating to policy, procedures and frameworks that allow organizations to deliver on their mandate of providing quality public services, especially to the most vulnerable and hard-to-reach. Capacity development in humanitarian situations is a specific focus within this strategy.
- Many of the challenges identified by the situation analysis relate to **systems strengthening** as a way of addressing the underlying causes of the problem. The UNDAF covers a range of systems strengthen actions from improving public service delivery - equitable access to health, education, water, sanitation, food, family planning and HIV services, to tools and equipment, to social protection programmes, and to better overall governance, incorporating public administration reforms, aid effectiveness and access to justice. Modelling service delivery systems in deprived areas and then taking them to scale forms an important part of this strategy.
- The ability to **strengthen the role of civil society and build partnerships** between stakeholders has always been one of the comparative advantages of the United Nations system in its role as honest broker and effective convenor. United Nations agencies can bring the equity dimension to many of its partnerships with civil society, the private sector, academia, foundations, and international donors and other actors by focusing on the most excluded and deprived populations, by using the expertise, technologies and resources of partners to scale up interventions and ensure sustainability.
- A key feature of the UNDAF 2012-2016, is a new focus on **targeting – both geographically and on the most deprived groups**. This is reflected in three ways:
 1. The identification of **priority convergence districts** on the basis of poor performance across five MDG-based parameters: poverty/extreme poverty; poor education, literacy, health and sanitation indicators; poor nutrition and food insecurity; and risks associated with the environment and climate change. These were expressed as five needs-based maps. In all, 20 common districts inform the UNDAF priorities.
 2. The targeting of 30 **cities and towns**, selected according to their population size, implementation capacity, geographical distribution and a host of socio-economic criteria.
 3. **Group-based identification** within programming functions where there is no clear geographical dimension. In these functional areas, interventions are targeted on achieving impacts and pay-offs which accrue to the most vulnerable and deprived groups (including a specific focus on gender inequality). This is particularly true of governance but also has relevance to poverty and environmental challenges.

The targeting strategy, whether regional, urban or group, will remain sufficiently flexible to reflect pragmatic considerations as well as serve as a guiding principle for resource allocation, joint programming and joint resource mobilization. The selection of the 20 districts and 30 cities or towns *does not* imply that all UN programmes will be implemented in all of the priority districts or urban centres and UN System interventions will continue to be guided by evolving needs and priorities. However, priority will be given to focusing interventions in these areas. The use of clearer and rationalized targeting as a central strategic thrust, also presents opportunities for enhanced planning, implementation, monitoring and evaluation of joint UN programmes.

UNDAF monitoring will be based on studies and surveys undertaken by the official government agencies (chiefly the Bangladesh Bureau of Statistics) and the UN System. Government will monitor progress against the UNDAF outcomes and outputs through its health and education information systems and Bangladesh Info. A series of evaluations are planned: violence against women programme (UNFPA); food and nutrition joint programme (WFP); biannual evaluations by the UN specialized agencies and country programme mid-term and end-of-cycle evaluations (UNDP, UNICEF, UNFPA, and WFP).

5. Seven Pillars and Twelve Outcomes by 2016

Based on the overarching goal and five core strategies described above, seven thematic areas or UNDAF Pillars were identified along with corresponding outcomes and lead agencies:

Pillar One: Democratic Governance and Human Rights (Lead Agency: UNDP)

Outcome One: Government institutions at the national and sub-national levels are able to more effectively carry out their mandates, including delivery of public services, in a more accountable, transparent, and inclusive manner.

Outcome Two: Justice and human rights institutions are strengthened to better serve and protect the rights of all citizens, including women and vulnerable groups.

Pillar Two: Pro-poor Economic Growth with Equity (Lead Agency: UNDP)

Outcome One: Economic growth is achieved in an inclusive manner, extending opportunities to the rural and urban poor and protecting the vulnerable from shocks.

Pillar Three: Social Services for Human Development (Lead Agency: UNICEF)

Outcome One: Deprived populations in selected areas, particularly women, children and youth benefit from increased and more equitable utilization of quality health and population, education, water, sanitation and HIV services.

Outcome Two: Children, women and youth demand and benefit from effective social protection policies and improved services aimed at eliminating abuse, neglect, exploitation, and trafficking.

Outcome Three: Deprived community members in selected areas practice key life-saving, care and protective behaviours and raise their demand for quality social services.

Pillar Four: Food Security and Nutrition (Lead Agency: WFP)

Outcome One: The urban and rural poor have adequate food security and nutrition throughout the life cycle.

Pillar Five: Climate Change, Environment, Disaster Risk Reduction and Response (Lead Agency: UNDP)

Outcome One: By 2016, populations vulnerable to climate change and natural disaster have become more resilient to adapt with the risk.

Outcome Two: By 2016, vulnerable populations benefit from natural resource management (NRM); environmental governance and low- emission green development.

Pillar Six: Pro-Poor Urban Development (Lead Agency: UNDP)

Outcome One: By 2016, at least three million urban poor have improved living conditions and livelihoods to realize their basic rights.

Pillar Seven: Gender Equality and Women's Advancement (Lead Agency: UNFPA)

Outcome One: Marginalized and disadvantaged women in selected districts and urban slums increase their participation in wage employment and other income-generating activities.

Outcome Two: Social and institutional vulnerabilities of women including the marginalized and disadvantaged are reduced.

Results-based Planning and Management

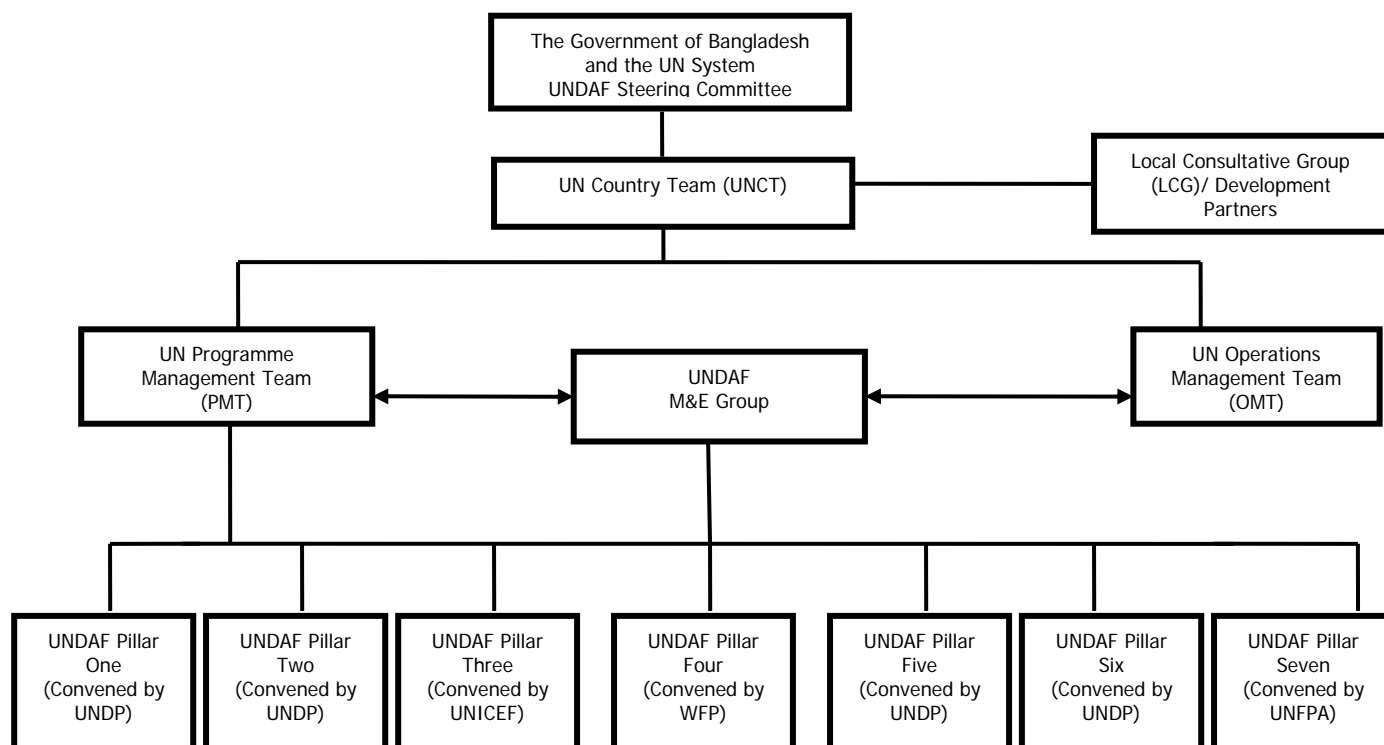
The Outcomes above reflect the capacity and comparative advantage of the UN System in Bangladesh and are part of results-based approach to programming, design, monitoring and mutual accountability for results. Outcomes are people focused – those with claims (rights-holders such as children, women, and the urban poor) and those with obligations (duty-bearers such as members of the civil service or of local Government institutions). Outcomes are phrased in language that describe a change by 2016 from the standpoint of rights-holders and duty-bearers, and accumulatively make a contribution to the achievement of national priorities and MDGs. As indicated in the Results Matrix (Annex I) Outcomes are achieved through a series of interrelated *Outputs* – usually changes in skills and abilities or strengthened services with the resources provided and within the time-frame specified. Results, whether quantitative or qualitative, have indicators that make it possible to assess whether they were achieved or not. The Outcomes in an UNDAF describe the intended changes in the development conditions over five years resulting from the UN System working together. But their achievement depends also on the commitment and actions of multiple partners and stakeholders, particularly Government.

Coordination, Implementation and Monitoring Mechanisms

1. Coordination Mechanisms

The UN System in Bangladesh consists of ten resident agencies (FAO, ILO, UNAIDS, UNDP, UNESCO, UNFPA, UNHCR, UNICEF, WHO and WFP), 11 non-resident agencies (UNCDF, UNEP, UNIDO, UN WOMEN, UNODC, UNHABITAT, IAEA, IFAD, OHCHR, UNCTAD and UNOPS) and IOM (which has observer status). In order to facilitate a consultative and participatory approach, an UNDAF Steering Committee comprised of the Government and UNCT was set up to oversee the UNDAF's formulation and implementation. Similarly, an UNDAF Coordination Group will monitor implementation, ensuring progress towards the target results, and an UNDAF M&E Group will lead the monitoring process. In addition, Government counterparts and development partners will participate in UNDAF Joint Annual Reviews to document UNDAF achievements and challenges. UNDAF management and coordination mechanisms will follow the structure given in the Figure 1 below. A summary of the roles and responsibilities of each of the standing Groups follows on. The structure aims to anchor the UNDAF to existing development processes in Bangladesh such as the Joint Cooperation Strategy (JCS), the Local Consultative Group (LCG) mechanism and the government national development planning regime.

Figure 1: UNDAF Management and Coordination Mechanisms



The *UNDAF Steering Committee* is responsible for providing effective oversight, guidance and monitoring of implementation at a strategic level. The Steering Committee will be co-chaired by the ERD Joint Secretary (UN) and the UN Resident Coordinator (RC). As the RC is the UNCT team leader, he/ she will therefore ensure that UNDAF Steering Committee's observations and feedback are addressed by the UNCT when necessary.

The *UN Country Team (UNCT)*, in its capacity as the interagency coordination and decision making body, will plan and work together, through the RC, to ensure the effective delivery of tangible UNDAF results in support of the Government development agenda and the MDGs. The UNCT is responsible for overseeing the progress within the seven pillars, facilitating and harmonizing operational and programmatic modalities as required. The UNCT is responsible for providing oversight and guidance to the UN Programme Management Team (PMT) and the UN Operations Management Team (OMT).

The *UN Programme Management Team (PMT)* is responsible for providing overall programme coordination and technical support to UNDAF implementation, ensuring linkages among the UNDAF pillars and coordinating UNDAF Joint Annual Reviews through the UNDAF Pillar group conveners. The PMT chair is responsible for informing the UNCT of any issues that require attention. For monitoring UNDAF implementation, the PMT will be supported by the UNDAF Monitoring and Evaluation (M&E) Group. The PMT is comprised of UN Deputies and/or senior programme officers as appointed by the UNCT.

The *UN Operations Management Team (OMT)* is responsible for overseeing progress in the delivery of common services and systems, and facilitating operational support to areas in need of accelerated progress. For monitoring UNDAF implementation, the OMT will be supported by the UNDAF Monitoring and Evaluation (M&E) Group. The OMT Chair is responsible for informing the UNCT of any issues requiring their attention and vice-versa. The OMT is comprised of senior operations officers.

The *UNDAF Monitoring and Evaluation Group (UNDAF M&E Group)* is responsible for tracking progress of the UNDAF, monitoring the validity of assumptions and risks made at the design stage. The M&E Group will monitor progress via an agreed UNCT M&E plan and provide support to pillar groups on all matters related to the Joint Annual Review process. Through the chair, the UNDAF M&E Group reports to and supports the PMT and OMT by bringing to their attention any issues that require attention. The UNDAF M&E Group is chaired by a UN Agency Deputy and is comprises M&E officers and/or senior officers of the UN agencies.

The *UNDAF Pillar Groups*, through their conveners, are responsible for undertaking periodic reviews of UNDAF outcomes, through the UNDAF Joint Annual Reviews and for organising regular pillar meetings to review technical issues and monitor progress toward achievement of outputs. The UNDAF Pillar Groups comprise programme officers assigned by the respective agencies.

To ensure greater complementarity and coherence, the above groups, with the exception of the Government and UNDAF Steering Committee, will function under the UN RC's leadership with RCO support.

In addition, the aid environment in Bangladesh is constantly evolving, characterized by a diversity of development partners and some level of aid fragmentation. The UN System has an important role to play in improving aid effectiveness in Bangladesh, which requires UNCT strategic positioning. In an effort to implement a shared commitment to aid effectiveness, the Government and 18 development partners in June 2010, signed the *Joint Cooperation Strategy (JCS)*. This includes commitments from partners to align ODA to Bangladesh's priorities as set out in national and sector strategies. Partners also agreed to work more towards a common results framework which aims to encourage the use of programme-based approaches and sector rationalization. The UN is a signatory to the JCS and one of the permanent members of the Executive Committee of Local Consultative Group (LCG). Through this forum the UNCT will continue to enhance the linkage between the JCS and the UNDAF to ensure that key development priorities are met.

2. Delivery mechanisms

The UNDAF will be implemented through cooperation between the GoB and UN agencies' country programmes and projects; the priorities of the latter will be consistent with those of the UNDAF and summarized in a joint UNDAF Action Plan. The programme cycles of the UN Development Group Executive Committee (ExCom) agencies – UNDP, UNCDF, UNFPA, UNICEF and WFP - have been harmonized with the UNDAF and Sixth Five Year Plan. Although the specialized agencies (FAO, ILO, UNAIDS, UNCDF, UNESCO, UNEP, UNHCR, UNIDO, UN WOMEN, UNODC and WHO) have not adopted a fully aligned programming cycle, consistency with the UNDAF will be achieved through Annual Work Plans or bi-annual agreements.

UN agencies will implement their respective programmes and projects with the support of relevant line ministries at national and sub-national levels, and under the overall coordination of ERD and the UN Resident Coordinator's Office (RCO).

Bilateral and multilateral partnerships will be supported through LCG/DPP plenary and existing coordination mechanisms (SWaps) to ensure that the UNDAF continues to respond to the LCG framework and the JCS, and also that UNDAF-related issues are addressed and results achieved.

UNDAF Narrative

UNDAF Pillar One: Democratic Governance and Human Rights

Overview

Bangladesh made progress in democratic governance during the 2006-2011 UNDAF period. The country successfully managed the democratic transition from a *caretaker* government to an elected government with one of the fairest elections and highest level of participation in its history. The high level of political participation in the elections, supported in no small measure by the UN, was indicative of how far Bangladesh has moved towards democratic governance. In particular, electoral management and institutions of accountability have been strengthened. The Judiciary was separated from the Executive and laws establishing a National Human Rights Commission and Right to Information Commission were passed. The gains that were made, however, are fragile. In a highly polarized political environment major challenges remain. In particular, confrontational *winner takes all* political dynamics continue to hamper efforts to strengthen democratic governance, develop mechanisms to protect human rights and achieve the MDGs. These challenges are also compounded by weak service delivery mechanisms. Central and local government is experiencing ongoing organizational and legislative change driven by the need to significantly improve service delivery. These are long-term processes and profound challenges persist. Key democratic institutions, such as Parliament, the Electoral Commission, Judiciary, and the civil service require strengthening and greater functional independence. The Judiciary, in particular, is vitally important given its role in upholding the rule of law, resolving disputes and providing checks and balances. However, it continues to suffer from large backlogs of more than 1.8 million unresolved complaints. Consequently, the poor and disadvantaged, especially women and children, struggle to access fair and equitable justice.

Results Expected and Rationale

UNDAF Pillar One is closely linked to the Millennium Declaration and MDG 3 (Promote Gender Equality and Women's Empowerment) by supporting the national priority on better governance to defend rights and tenets of justice. The Pillar is linked to all other Pillars, and in particular to Pillar Three, given that their achievements rely heavily on the outcomes and outputs of Pillar One. The proposed strategies fall mainly within the category of systems strengthening, but policy advocacy and capacity building is also emphasized.

Given the significant challenges to governance, human rights and equitable access to justice, the UNCT has decided to make Democratic Governance a key pillar of the UNDAF. Democratic Governance underpins sustainable human development and is central to achieving the MDGs. The UN System has considerable comparative advantage in supporting the Government in the area of democratic governance including the UN System's neutral and impartial policy advice, access to international best practices and lessons drawn from UN agencies' global experiences. As a trusted partner with a long history of cooperation with Government, UN agencies are able to support it in a number of areas which match the UN System's mandates and technical strengths. In addition, the UN System is increasingly adept at facilitating cooperation between a range of specialized agencies and programmes. Furthermore, as one of its corporate objectives, the UN System recognizes the importance of strengthening the ability of people to participate in representative democracy.

The MDG Progress Report 2009 identified three key governance challenges achieved by 2016. First, Bangladeshis including marginalized and deprived groups, are better represented and participate more actively and meaningfully. Second, that the civil service and local government are more responsive and better able to deliver public services. And third, that all people, including the most vulnerable, have better access to justice. These challenges were operationalized as two outcomes objectives. The first covers the participation and service delivery challenges, and the second, access to justice. This diagnosis and approach are clearly aligned to national priorities. During the Bangladesh Development Forum in February 2010, the Government signaled its determination to strengthen key democratic institutions. The importance of good governance and its potential multiplier effects are well understood. For example, the Government's *Outline Prospective Plan* recognizes that "strengthening government institutions and the rule of law are vital for improving the investment climate and social inclusion." The interventions included within this framework will support those objectives.

The UN System will continue to strengthen elections management and Parliament, and will increasingly complement this with efforts to deepen democracy through strengthened partnerships with civil society and the media. Active debate on key governance issues to build social accountability and create political space, accompanied by capacity building for stronger democratic and independent institutions, will help to moderate political competition. There will be a major focus on strengthening central and local governance systems for effective and responsive public service delivery. This will include working with the civil service, local government and the community, especially rural women. New technologies will be supported to build new kinds of relationships between Government and the private sector to promote innovation in public service provision. The UN System will also work with Government to promote aid effectiveness and support the implementation of national strategies that focus on achieving the MDGs.

UNDAF Pillar One will see a renewed focus on improved access to justice. Reducing case backlogs through improved access to Village Courts, strengthened case management in the formal Judiciary and better cross-sector coordination will improve access to justice for the rural poor and disadvantaged.

Role of Partners and Implementation Modalities

UNDP will serve as lead agency coordinating the UN System's close collaboration with the Bangladesh Election Commission to sustain the reforms undertaken to support credible elections. Special emphasis will be placed on working with elected representatives at national and local levels, as well as involving the public in defining local priorities. Parliament's institutional capacity will be improved to support parliamentary standing committees to undertake their oversight functions. To facilitate these activities, the UN System will strengthen its demand-side programming to build the capacity of rights holders to participate in the public sphere. This work will support media and civil society to promote debate and dialogue on key governance issues.

Securing equitable access to justice for all is essential for poverty alleviation and human development. The UN System will support areas that strengthen the right to remedy, human security and the rule of law. Central to those efforts will be the enhanced capacity of justice institutions to reduce case backlogs, plan and coordinate. A national strategy for the justice sector, underpinned by multi-agency cooperation and harmonized donor support, will be an important step. There will be a focus on access to affordable and fair outcomes in the support of Village Courts and legal aid. The UN System will work with law enforcement agencies to improve service orientation, gender and human rights sensitivity. The capacity of the National Human Rights Commission, the Information Commission, and the Child Ombudsman/ Commissioner will also be strengthened.

The UN System will support partners by working mainly through nationally implemented programmes. This will help to ensure greater ownership and sustainability of UN-supported initiatives.

UNDP will serve as lead agency coordinating the comparative advantages of other UN agencies as follows:

- Increase participation in the democratic process, governance and independent institutions (including the Electoral Commission, Parliament, local government, media, and civil society).
- Build the capacity of the civil service and local government institutions to be more responsive, UNDP and UNCDF will jointly support efforts to improve public service delivery and accountability. National partners will include the Ministry of Establishment, Local Government Division, Ministry of the Chittagong Hill Tracts Affairs, Ministry of Information (MoI), Ministry of Finance (MoF), Planning Commission, the Prime Minister's Office, the media and civil society.
- UNDP, UNAIDS, UNHCR, ILO, IOM, UNFPA, UNESCO and UNICEF will support efforts to increase vulnerable groups' access to justice through institutional capacity building and advocacy. Initiatives will cover community policing, reducing case backlogs, improving access to affordable local justice, juvenile justice, community-based alternative dispute resolution mechanisms and the promotion and protection of human rights (including increased public awareness of HIV and countering human trafficking). National partners will include the Ministry of Law, Justice and Parliamentary Affairs, Ministry of Home Affairs, Bangladesh Police, Ministry of Local Government and Rural Development, and the media and civil society.
- UNESCO will work with the Ministry of Information, media and civil society to support the reform of media-related laws and strengthen media institutions to foster freedom of expression and public debate.

UNDAF Pillar Two: Pro-poor Economic Growth with Equity

Overview

With a national poverty headcount ratio of approximately 40 per cent (2005 data), considerable regional variations between east and west, and deteriorations in the size distribution of income, securing pro-poor growth is a central area of concern for the UN System. Proposals target accelerated poverty reduction by targeting those sectors in which the poor are employed, and those localities where the incidence of poverty is highest. This requires attention be given: to backward rural areas (the rural headcount rate is 43.8 per cent versus an urban one of 28.4 per cent); to urban slums (where the depth of poverty is highest); and to securing a more pro-poor internal and external migration. This implicitly involves efforts to re-shape the underlying growth model, which centres on the dominant ready-made garments sector fed by large rural-migration, and the flow of external remittances to support domestic demand. A major aim is to boost labour market participation and especially for women, with a preference for greater formalization of work. In addition, interventions aim to address the major external risks and vulnerabilities associated with the current drivers of growth.

Results Expected and Rationale

UNDAF Pillar Two addresses the Income and Poverty national priority and contributes to the achievement of MDG 1 (Eradicate extreme poverty and hunger), MDG 3 (Promote gender equality and empower women) and MDG 8 (Develop a global partnership), supporting the national priority to boost production and incomes, and reducing poverty.

The Pillar aims at tackling three frequently identified constraints relating to the extent and sustainability of pro-poor growth, such as the limited access to economic opportunities and productive assets by peripheral groups, large spatial variations, and the mainstreaming of poverty reduction in macroeconomic policy responses. The proposed interventions primarily address MDG 1, but better livelihoods based on a more equal income distribution will have a positive knock-on effect on other MDGs.

These objectives are framed as a single outcome: Economic growth is achieved in a more inclusive manner, extending economic opportunities to the rural and urban poor and protecting the vulnerable from shocks.

The strategy emphasizes four key drivers of poverty reduction: greater participation within the labour market on the basis of decent work (as defined by international conventions); building capacity for higher overall productivity; the mediation of risks facing MSMEs and farmers; and the establishment of a functional social protection system. Activities include: supporting vocational training; developing new approaches to social safety nets; better management of common pool resources; supporting better policy planning capacity at the macro level within Government; improving legal remedies to secure decent employment; improving the resilience and productivity of marginal farmers; improving livelihoods through area-based development initiatives and encouraging the adoption of more pro-poor direct foreign investment (DFI) and trade policies.

Pillar Two is both supportive of, and supported by, interventions planned through other pillars, particularly Pillar Six on Pro-poor Urban Development with which it shares a focus on the achievement of accelerated and inclusive growth. In addition, there are close links with Pillar Five (Climate Change, Environment, Disaster Risk Reduction and Response) activities connected with vulnerability and resilience and Pillar Seven (Gender and Empowerment of Women) efforts to secure economic equality between men and women.

Role of Partners and Implementation Modalities

UNDP as lead agency will coordinate the UN System's close collaboration with the Planning Commission's General Economics Division (GED), as the national poverty focal point and strategic policy-making partner. Existing partnerships will be extended and new ones established with Government entities such as Local Government Engineering Division (LGED), the Ministry of Labour, the Ministry of Agriculture (MoA), the Ministry of Social Welfare (MoSW), the Ministry of Expatriate Welfare and Overseas Employment (MoEWOE), the Ministry of Chittagong Hill Tracts (MoCHT), the Ministry of Food and Disaster Management (MoFDM), the Ministry of Education (MoE), the Ministry of Primary and Mass Education (MoPME), the *Palli Karma-Sahayak* Foundation, as well as local Government, and NGOs.

UN System interventions can be summarized as follows:

- UNDP will serve as lead agency. Its direct work will be carried out with key national partners to secure inclusive growth and greater equity within the economy by boosting labour market opportunities, by

reducing risks and vulnerabilities, by building capacity for policy development and the expansion of area-based programming.

- FAO will work mainly with the Ministry of Agriculture (MoA), Ministry of Labour and Employment (MoLE) and the Ministry of Food and Disaster Management (MoFDM), to strengthen capacity for policy development so as to enhance food security and accelerate agricultural development, with a focus on increased access to and participation in input and output markets of marginal farmers. FAO will continue assisting the Government in the control of animal-borne diseases, such as avian influenza and anthrax, which put human health and economic growth at risk.
- ILO will work closely with the ministries of Labour, Expatriate Welfare, Education and other government institutions, in addition to the private sector and workers organizations, to promote opportunities for women and men to obtain decent and productive work, in conditions of freedom, equity, security and human dignity.
- UNIDO will work with the Ministry of Information (MoI), Ministry of Textiles and Jute (MoTJ), Bangladesh Standard and Testing Institute (BSTI), the Department of Forests (DoF), and the private sector to promote sustainable economic growth by supporting higher standards and quality management in line with international best practice. In addition, the organisation will work to increase awareness about quality standards in the business community to support the development and diversification of exports.
- IOM will work closely with relevant civil society and government partners (namely the Ministry of Expatriates' Welfare and Overseas Employment, Bureau of Manpower Employment and Training and Ministry of Foreign Affairs) to enhance the overseas employment sector in Bangladesh. Initiatives will focus on skills development, market research, awareness-raising on overseas employment opportunities and procedures, and advocacy to protect migrants' rights.
- UNESCO will work mainly with the Ministry of Education (MoE) and Ministry of Primary and Mass Education (MoPME) for further support in capacity building of the relevant Director of Technical Education (DTE), Ministry of Education (MoE), Bangladesh Technical Education Board (BTEB) and institutions staff for operationalization of the four main components of the Technical and Vocational Education and Training (TVET) sub-sector programme and ensure proper coordination of the outcomes of the three on-going TVET projects and integrating them in the TVET sub-sector programme.
- UNICEF will work closely with the Ministry of Women and Children's Affairs (MoWCA), Ministry of Home Affairs (MoHA), Ministry of Social Welfare (MoSW), Ministry of Labour and Employment (MoLE), Ministry of Law, Justice and Parliamentary Affairs (MoJLPA), Ministry of Expatriates Welfare and Overseas Employment (MoEWOE), and civil society, concentrating on vulnerable children, women, and young people's access to basic social services (including through targeted cash transfers), and support them in taking lead roles in forums at all levels (refer to pillar 3).
- WFP will support the Government in fostering pro-poor economic growth in both rural and urban areas by strengthening its capacities to design and implement efficient and effective safety net programmes. To do so, WFP will work closely with Ministry of Women and Children's Affairs (MoWCA) and Ministry of Food and Disaster Management (MoFDM) and civil society. WFP's programmes will also contribute to protecting and enhancing livelihoods of the poorest households and reducing vulnerability to natural disasters. In addition, WFP will implement experimental and innovative food and cash-based asset transfers and safety ladder pilots to promote the creation of alternative livelihood options, and facilitate access to economic opportunities for the most disadvantaged and deprived women.

UNDAF Pillar Three: Social Services for Human Development

Overview

Bangladesh has attained the MDG target for gender parity in primary and secondary education enrolment. It is on track to achieve the targets related to child mortality, halting the spread of malaria and tuberculosis, and increasing access to sustainable safe drinking water and sanitation. However, completing primary school and ensuring universal access to reproductive health remain challenging. Analysis of the 2009 Multiple Indicator Cluster Survey (MICS) data indicates that considerable disparities exist between districts and within districts in terms of achieving the MDGs. The survey found substantial geographic disparities between the best and worst performing districts for several indicators, including infant mortality (35 per cent between the best and worst), skilled birth attendant at delivery (53 per cent) under-five mortality (54 per cent) and net attendance in primary education (30 per cent).

Results Expected and Rationale

UNDAF Pillar Three addresses the national priorities of Water and Sanitation, and Human Resource Development (Education, Health and Population), plus MDG 2 (Achieve Universal Primary Education), MDG 3 (Promote Gender Equality and Empower Women), MDG 4 (Reduce Child Mortality), MDG 5 (Improve

Maternal Health), MDG 6 (Combat HIV/AIDS, malaria and other diseases) and MDG 7 (Ensure Environmental Sustainability). Simultaneously, it supports national priority on securing human resource development and improving water and sanitation.

The 2009 Millennium Development Goals Progress Report highlights progress made towards the MDGs and the country's key development challenges. Pillar Three aims at addressing national development priorities for promoting human development and attaining social justice, empowerment and gender parity. These are defined in *the Perspective Plan 2010-2021* and the *Five-year Development Plan 2011-2015* (currently under preparation). Through this priority area, the UN System aims to support Government to accelerate the gains already made in the relevant MDGs. It also aims to ensure that the momentum is sustained and progress is evenly distributed across geographic areas. This will require accelerating efforts on the remaining problematic programme areas.

Pillar Three aims to achieve the following results that help the country meet the Millennium Declaration and MDGs 2 to 7.

- Increased coverage and more equitable utilization of quality services in the areas of health, population, education, water, sanitation and HIV by deprived populations in selected rural and urban areas, with particular attention to women, children and young people;
- Social protection policies and services enhanced and utilized to eliminate abuse, neglect, exploitation, and trafficking of children, women and young people, with emphasis on demand creation and delivery of services in selected areas;
- Community members are practising key life-saving, care and protective behaviours and raising their demand for quality services in health, population, education, water, sanitation and HIV.

The body of scientific evidence, as well as documented experience over the last two decades, show that improved education lowers child mortality rates, improves incomes, increases ability to negotiate safe sex, allows participation in civil society, and lowers chances of child labour and child marriage. Communication for development would contribute to increasing demand for and utilization of quality services, and more effective participation of rights holders in service delivery. Increased quantity and quality of water and sanitation would contribute to retaining girls in school and reducing morbidity. Thus the central strategic thrust under Pillar Three is to create linkages and synergies between health, education, water, sanitation, community care, and HIV and AIDS, in order to achieve higher levels of social protection for the most deprived and vulnerable.

Given the correlation between inequality and poverty reduction, the UN System is advocating equitable allocation of resources, taking into account recent data on social deprivation. Effective geographic targeting and convergence of social services to the most deprived and vulnerable rural and urban areas will enhance synergies across the different sectors and ensure the achievement of the MDGs with equity.

UNDAF Pillar Three also reflects results from the MDG national dialogues which form a key part of country analysis. It considers the UN System's comparative advantage in technical expertise. The UN System has a convening role at both local and national levels. This can help develop closely linked social models that enhance policy, legal and normative frameworks. Interventions have a broad thematic coverage and facilitate exposure to international experience and knowledge acquisition within the strategy of capacity building.

The UN System has contributed to the formulation of national policies, for example, the inclusion of early childhood development as central to the education policy framework. The UN System continues to chair the consortium of development partners in the health and education sector, promoting collaboration and effective cooperation among development partners in support of national sector programmes. In the area of child protection the UN System has fostered harmonization of national Laws with international conventions and treaties. In addition the UN has played a catalytic role in mobilizing resources and building partnership between civil society and Government across the social sectors

To achieve this outcome, complementary results from other UNDAF pillars are essential. These include improved governance, income opportunities for the poor, improved food security and nutrition and disaster risk reduction. Towards this end the UN System in collaboration with other partners, will make a concerted effort in the twenty priority districts namely: Nilphamari, Kurigram, Rangpur, Gaibandha, Jamalpur, Sirajganj, Netrokona, Sunamganj, Sylhet, Habiganj, Satkhira, Khulna, Bagerhat, Barguna, Patuakhali, Bhola, Khagrachhari, Rangamati, Bandarban and Cox's Bazaar. These most disadvantaged districts for convergence were selected according to their performance against the following:

- Incidence of poverty as per the poverty map of 2005 (World Bank, WFP and the Government), districts falling mostly under the lower poverty line were identified;
- UNICEF's Composite deprivation index (CDI) using four key MDG performance indicators (skilled birth attendant, net attendance in secondary education, access to improved sanitation, and female literacy);
- Susceptibility to climate change effects/disasters.

An additional criterion for identification of the districts was also the presence of UN joint programmes where two or more UN agencies have interventions. This approach ensures optimal synergy and complementarity.

The 20 districts identified include: areas with very high poverty incidence and susceptibility to floods in the north; cyclone-prone areas in the coastal belt; and the hard-to-reach and tribal areas in the north and south-east.

Role of Partners and Implementation Modalities

UNDAF Pillar Three aims to achieve key results through geographic targeting and the convergence of basic social services to the most deprived geographic areas. Emphasis will be placed on demand creation and communication for development and social change, provision of services, and systems strengthening. The UNCT will develop joint programmes and will implement, monitor and evaluate activities.

UN agencies' contribution to both the primary education and health sectors will continue to be coordinated through the existing SWAPs, chaired by the respective ministries.

UN agencies will work with the following ministries and their entities: the Ministry of Health, the Ministry of Education, the Ministry of Primary and Mass Education, the Ministry of Law, Justice and Parliamentary Affairs, Ministry of Information, Ministry of Religious Affairs (MORA), Ministry of Labour And Employment, Ministry of Chittagong Hills Tracts Affairs, Ministry of Women and Children Affairs (MWOCA), Ministry of Social Welfare, Ministry of Communications, Ministry of Youth and Sports, Ministry of Water Resources, Ministry of Home Affairs, Ministry of Textiles and Jute, and Ministry of Local Government, Rural Development and Cooperatives, .

Civil society will play a complementary role, particularly in the area of demand creation, and communication for development and social change. Thus the UN System will continue working with international and local NGO partners such as International Centre for Diarrhoeal Disease Research, Bangladesh (ICDDR), Bangladesh Rural Advancement Committees (BRAC), Grameen, Campaign for Popular Education (CAMPE), Save the Children Alliance, Alive and Thrive, Food and Nutrition Technical Assistance (FANTA), Helen Keller Institute (HKI), Action Contre la Faim (ACF), Medecins Sans Frontieres (MSF), OXFAM, Water AID, Action Aid, Concern Worldwide and others in line with the procedures for engaging NGOs. While operating under the overall guidance of the Government, the UN System may opt to support national dialogue on issues of particular global and national importance within the country. The purpose of such support would be to provide a collaborative platform for a number of government, NGO and aid co-operation partners to discuss issues of common concern, and agree upon common strategies and actions. The focus will be on developing capacities and identifying mechanisms for enhanced collaboration with the Government, NGOs, civil society and private sector, to maximize opportunities for convergence, and pilot innovative approaches in order to draw lessons for wider application.

UNICEF will serve as lead agency coordinating the comparative advantages of other UN agencies as follows:

- UNICEF will contribute to strengthening government capacities for delivery of water supply, sanitation, primary health care, pre-primary, primary, non-formal education and secondary education, child protection and HIV prevention services in close collaboration with civil society organizations and community involvement. The objective is to increase availability of and access to quality services for children and women in the selected districts. It will also support the development and revision of evidence-based policies, strategies and guidelines.
- UNDP will provide ongoing assistance for strengthening social service systems and provision in the three Chittagong Hill Tracts (CHT) districts. The focus will be on community-based provision and stronger coordination by the Hill District Councils.
- UNAIDS will, in addition to ensuring a coordinated UN System response to AIDS, focus on generating strategic information to better define the epidemic and response situation, advocating policy reforms, and facilitating the formulation of national strategies. It will also provide technical assistance for setting

standards and building national capacity to coordinate, manage, implement and monitor an effective national response to HIV.

- UNHCR will work with partners such as the Ministry of Food and Disaster Management, WFP and UNICEF to enhance refugees' and host community access to basic services.
- IOM will continue to promote gender equality and support the empowerment of women migrants. IOM will also examine the health risks that migrants are exposed to and support ways to reduce them.
- UNESCO will contribute to mapping, policy/strategy/guideline development. It will develop the capacity of Government and NGO personnel and provide technical resources in the areas of early childhood care and education, non-formal education, multilingual education, HIV/AIDS education, and the effective use of ICT for increasing access and quality in education.
- WHO will adapt the evidence and/or best practices to develop and update policies and strategies and to support the development of operational guidelines for safe and universal access to quality health and population services and MNCH, AH-FP district planning according to the local level planning guidelines?
- UNFPA will strengthen the Government and community capacities to increase availability of and access to quality family planning, and maternal, and adolescent health services in selected districts. It will support the revision and development of evidence-based population and reproductive health, policies, strategies and guidelines.
- WHO, UNFPA, and UNICEF will contribute towards strengthening national and sub-national health systems and their capacity to provide quality family planning, maternal and neonatal health services (MNCH), adolescent reproductive health (ARH) services through their support to local level planning, budgeting and recruitment.
- ILO's role in the provision of social services will be focused on: social groups such as disadvantaged youth, working children, indigenous populations; disabled persons; women, and migrant workers (male and female) with particular attention to their access to services. It will assist Government through technical and vocational training and institutional support to informal apprenticeships. It will support teacher training for vocational and technical schools, non-formal education for child labourers withdrawn from work, the economic empowerment of families of child labourers, and workplace improvement. Implementation modalities include public-private partnerships, inter-agency collaboration, and partnerships with the employers, trade unions and NGOs.
- UNODC will advocate and contribute to the scaling-up of oral drug substitution therapy (OST) for harm reduction and prevention of HIV transmission through injecting drug use. UNODC will continue to facilitate implementation of HIV prevention programmes for prisoners and spouses of most-at-risk populations. It will also support capacity building of the relevant Government and civil society organizations focusing on quality of service, human rights and gender equality within the framework of an effective national response.
- IAEA will closely work with the Nuclear Medicine Centre and the Bangladesh Atomic Energy Commission (BAEC). IAEA will focus on strengthening and expanding national capacity in nuclear medicine and related human resource development.

A coherent system for effective collaboration and co-ordination will be essential for the UN System's achievement of results at the output and outcome levels captured in the results matrix. To guide achievement of outputs for which the UN System is accountable, the designated UN lead agency will be responsible for convening relevant UN System representatives at least quarterly. Following the approval of the UNDAF, the relevant UN representatives will meet to develop a joint work plan for the 2012-2016 UNDAF period. The work plan will enumerate the activities of each entity, aimed at a comprehensive compilation of the UN System's efforts to achieve stated outcomes. During the work planning period, it is expected that UN agencies will determine optimal collaborative mechanisms. Areas for joint programming will be explored. UN agencies may also agree on individual implementation of their respective programmes. In all instances, joint consultation and monitoring on a quarterly basis will be carried out.

UNDAF Pillar Four: Food Security and Nutrition

Overview

Bangladesh is unlikely to meet the MDG targets for food security and nutrition. Despite progress in the domestic production of food grains, consumption of safe and nutritious diets remains a concern. Food-borne illnesses associated with consumption of unsafe food and water remains high and contribute significantly to the disease burden. Forty per cent of the population does not obtain the minimum level of dietary energy, and a quarter of the total population has low diet diversity, predominantly based on starchy staples. Undernutrition in children under five remains high. The global underweight rate of 37.4 per

cent exceeds the WHO critical threshold of 30 per cent. Anaemia is of particular concern for almost all population groups, but especially among pregnant and lactating women, and children under five years. There are significant gender and age-related inequities as well as regional disparities in access to food. Female-headed households are nearly two times more food insecure than male-headed households². Food insecurity, poverty and global acute undernutrition are more pronounced in the north-western and the southern parts of the country³. Inadequate feeding and caring practices, particularly for infants and young children, and prevalence of diseases directly contribute to the high rates of undernutrition. Intergenerational dynamics are another major cause of undernutrition, which is reflected in the high proportion of children born with low birth weight (36 per cent).

Food sufficiency is linked largely to access to income opportunities and productive assets. In 2009 it was estimated that nearly half of food insecure households do not have any permanent employment. Shocks related to climate change and economic crisis also eroded the past gains in food security and nutrition. Consecutive natural disasters in 2007 and 2008 led to an increase of 25 per cent in acute malnutrition in affected areas and forced an additional 7.5 million people below the poverty line⁴. The situation is exacerbated by a steadily increasing population and limited land for agricultural production.

Results Expected and Rationale

The interventions proposed in Pillar Four are in line with the UNDAF strategy and the gaps identified in the analysis of MDG 1C (Eradicate Extreme Poverty and Hunger - Halve, by 2015, the proportion of people who suffer from hunger), MDG 3 (Promote Gender Equality and Empower Women), MDG 4 (Reduce Child Mortality), MDG 5 (Improve Maternal Health) and MDG 7 (Ensure Environmental Sustainability). The Pillar also contributes to the following national priorities: boosting production, income and reducing poverty, promoting environmental sustainability and securing human resource development.

Major opportunities for the improvement of food security and nutrition exist through the sector investment plans for health and food security. These are being prepared for the same five-year period. A number of national documents reflect the priority given by the Government to food security and nutrition. They include:

- Draft sixth five-year development plan (2011-2016)
- *Poverty Reduction Strategy Paper (2005) and The Revised National Strategy for Accelerated Poverty Reduction II (2009-2011)*
- *National Food Policy (2006) and Plan of Action (2008 – 2015)*
- *Bangladesh Country Investment Plan (BCIP) for Agriculture, Food Security and Nutrition, 2010-2015⁵*
- *National Health Policy*
- *Draft Strategic Plan for the Health and Population Sector Development Program (HPSDP) 2011-2016*
- *MDG Progress Report*

Although significant efforts and important decisions have been made by Government to mainstream nutrition into the national development agenda, weak institutional linkages and lack of technical capacity give rise to the risk that these investments may not contribute to significant improvement of food security and nutrition. Moreover, nutrition activities have been implemented on an ad-hoc basis, responding to earmarked donor funds, and not considered as interrelated components of a comprehensive and integrated strategy of intervention. The multisectoral nature of nutrition and the need for coordination among different stakeholders in agriculture, food and health sectors require a high degree of flexibility and managerial capacity that the UN System is in a position to offer Government, especially at the initial and more critical stages of implementation. The UN System therefore, intends to provide technical and institutional support and sustain its efforts to accelerate progress towards achieving the national food security and nutrition targets. The Plan of Action of the National Food Policy and the BCIP are shared reference frameworks for the UN System in food security and nutrition interventions.

Natural disasters such as flooding and cyclones are frequent in Bangladesh. They often hit the poorest people the hardest. One of the key challenges will be ensuring that disaster affected households and displaced populations receive safe and nutritious food as part of an emergency response programme. A longer-term challenge is to ensure that disaster affected households, especially those who have been

² HFSNA 2009

³ HFSNA 2009, HIES 2005

⁴ Coordination Team of the UN System High-Level Task Force on the Global Food Security Crisis (HLTF), Bangladesh Full Country Visit Report, 19-25 July, 2009, p2-4.

⁵ At the moment of formulating the UNDAF, the BCIP is under revision for an alignment with 6th Five-Year Plan under the leadership of the Ministry of Food and Disaster Management.

forcibly displaced, have access to livelihood opportunities, particularly to agricultural inputs. It will be equally important to ensure that vulnerable households are better prepared and have greater food security, and therefore increased capacity to deal with future natural disasters and the impacts of climate change.

In line with the above analysis, UN agencies will focus on supporting the Government as it accelerates progress in food security and nutrition of the poorest, most vulnerable populations. The focus will consider the needs of the most vulnerable family members such as women and children under-five.

To achieve this outcome however, complementary results from other UNDAF Pillars also need to be achieved. These include improved access to social services and income opportunities for the poor.

Role of Partners and Implementation Modalities

Through this Pillar's five outputs, the UN System will complement the Government's efforts to strengthen national nutrition capacities and food security including nutrition and food safety through a well-coordinated, inter-sectoral approach. This will be complemented by the REACH initiative instigated by WFP/UNICEF/FAO and WHO. In several outputs, the UN System will ensure that minimum food and nutrition policies, guidelines and procedures are mainstreamed and implemented through the food security and health sectors. The UN System will support the Government in facilitating better access by the poorest populations to malnutrition treatment services, agricultural and food technologies, safe and micronutrient rich food. Providing direct interventions, however, is not enough especially with deep rooted social determinants of health and nutrition such as gender, taboos and other cultural practices that negatively impact nutrition status. Increasing awareness on food safety and nutrition and its social determinants will help close the gap between knowledge and practice.

During disasters, UN agencies will work to complement Government relief and recovery efforts. This will help ensure that all affected communities have access to adequate and appropriate food and nutrition support, as well as assistance for agricultural rehabilitation during the recovery phase.

UN agencies will work with the Ministry of Health, both Directorate General for Health Services (DGHS) and Directorate General for Family Planning (DGFP) and their entities. In addition, the Ministry of Agriculture and the Ministry of Food and Disaster Management (MOFDM) are key partners in the implementation of the National Food Policy and its Plan of Action. The MoFDM will be the key partner during a crisis.

The private sector and civil society will need to play a complementary role – especially in ensuring a stable market provision of agricultural inputs at affordable prices.

The UN System will also continue working with international and local NGO partners such as ICDDR, BRAC, Save the Children Alliance, Alive and Thrive, Food and Nutrition Technical Assistance (FANTA), Helen Keller Institute (HKI), Action Contre La Faim (ACF), Medecins Sans Frontieres (MSF) and others in line with the procedures for engaging NGOs.

The Pillar's outcome and associated outputs will be reflected and refined in individual UN agencies' work plans, in line with agreed mandates and accountabilities. Pro-poor targeting will take place with a mutually agreed-upon set of development indicators. Monitoring activities in individual work plans that contribute to the UNDAF results matrix indicators will be the responsibility of the individual UN agencies. In the 20 convergent districts, costs for baseline and outcome surveys will be shared and planning and implementation will be carried out jointly.

WFP will serve as lead agency coordinating the comparative advantages of other UN agencies as follows:

- WHO will focus on normative and research activities. It will create or nationally adapt the evidence, advocate for healthy public policies and strategies, and create means to support the development of operational guidelines that ensure safe and universal access to quality public health services.
- UNICEF will contribute towards strengthening capacity of implementing minimum nutrition standards for women and children. It will recommend approaches for the treatment of malnutrition through the health services with community involvement, increase access to fortified foods and build awareness of social determinants of health and nutrition.
- WFP will contribute towards strengthening capacities to increase poor people's access to community-based treatment services for children and women with moderate acute malnutrition. WFP will also support the Government in its work to prevent under-nutrition in small children by exploring food-based

solutions. If an emergency response is required, WFP will ensure the food security of the affected population by providing a nutritious and balanced food basket that corresponds to their needs.

- IOM will provide assistance to vulnerable households, especially those displaced and affected by natural disasters and/or climate change, and to help support rehabilitation of food insecure households.
- FAO will lead the technical assistance for enhancing institutional coordination and monitoring of food security, safety and nutrition policies and investments. FAO will strengthen the capacity of the Government to implement food control related activities and react to food safety emergencies. FAO will continue its engagement in policy dialogue with the Government and in capacity strengthening for policies and investments in agricultural development and food security through the implementation of the National Food Policy Capacity Strengthening Programmed (NFPCSP), the Food Safety Project and the Global Agriculture and Food Security Programmed (GASP) financed project, the monitoring of the National Food Policy Plan of Action and Country Investment Plan (CIP) on Agriculture Food Security and Nutrition, the chairmanship of the Local Consultative Group on Agriculture, Rural Development and Food Security and the co-chairmanship of the Nutrition Working Group. Beyond, FAO will work with the Ministry of Health and Family Welfare (MoHFW) to strengthen the national food control system through developing capacities as well as provision of tools and equipment.
- UNHCR will complement efforts of the Government and of other UN agencies in ensuring that refugees and the host community have better access to food security and improved nutrition.
- UNICEF, WHO, FAO and WFP will continue to strengthen the Government's inter-agency coordination mechanisms on nutrition through REACH.
- IAEA will closely work with Bangladesh Atomic Energy Commission and the Department of Plant Breeding in Bangladesh Institute of Nuclear Agriculture (BINA) for strengthening the national capability for improving agricultural productivity and reduction of losses. Building on the earlier achievements, continued collaboration is envisaged in the priority areas of sanitary and phytosanitary treatment of food by irradiation, development of improved crop varieties (yield and disease resistant) using mutation techniques and biotechnology, veterinary drug residue monitoring, production of bio diesel, promotion of improved soil, water and nutrient management technologies, and prevention of insect infestation of food and resulting food losses and food processing and preservation.

UNDAF Pillar Five: Climate Change, Environment, Disaster Risk Reduction and Response

Overview

Bangladesh faces a diverse range of challenges in achieving sustainable development. These are further compounded by emerging climate change impacts and increased disaster risks. It is estimated that 93 disaster events occurred between 1991 and 2000, resulting in 200,000 deaths and causing \$5.9 billion in damage. A Government report estimated the costs of abnormal monsoon flooding in 2007 at \$1.1 billion and the directly attributable costs of Cyclone Sidr at \$1.7 billion. These figures are more disturbing when the distributional impact is considered. Impoverished areas and marginalized communities, especially women and girls suffer disproportionately, due to their greater vulnerability and limited resilience. Agriculture employs more than half of the workforce, and approximately 70 per cent of the population resides in rural areas. These communities remain largely without electricity, yet access to modern energy sources is central to improving livelihoods. Equally, degradation of natural ecosystems and pollution are impacting not only the environment, but also livelihoods and health conditions. Stresses associated with rapid urbanization resulting from environmental and climate factors – inadequate energy infrastructure, poor sanitation, pollution and a host of social services pressures – are becoming acute in urban centres. Again, these burdens have largely fallen on the poor. The country has made progress in reducing the death burden resulting from natural disasters. The remaining challenge is to protect livelihoods to ensure that people do not face poverty each and every time a natural disaster strikes, nor are they forced to migrate to urban slums.

Climate change is significantly exacerbating these problems. Efforts to accurately quantify the costs of climate change impacts remain crude and incomplete. However, the UN System has actively addressed the convergence of climate change and disaster risk reduction agendas. Through research and delivery efforts, the hard science of climate change has been translated into tangible, community-level actions to support adaptation of the way poor people live and work in the face of increased hydro-meteorological hazards.

Results Expected and Rationale

Pillar Five addresses a key challenge facing Bangladesh. It brings together UN System activities to address the priorities under MDG 7 Ensure Environmental Sustainability and the Government's priority areas of promoting better environmental sustainability and building better energy and other infrastructures. It is led by UNDP with its background in disaster relief and recovery, and environment and climate change capabilities, supported by other key UN partners.

The UN System will promote a balanced approach to ensure full integration of poverty, environment and climate change linkages within development interventions. It will act to mitigate the impact of natural disasters on livelihoods through disaster risk reduction. Emphasis will also be placed on mainstreaming these linkages into national and sectoral policies and programmes.

With strong Government ownership at the policy level, the strategy focuses predominantly on systems strengthening and capacity development within Government institutions. Area-based support and policy advocacy will be undertaken to inform stakeholders of the major challenges and solutions. Efforts emphasize cross connections and the need to address environmentally-driven inequalities. There are clear linkages between poverty reduction (MDG1) and the objectives under MDG indicators 7.4, 7.5 and 7.6. Additionally, there is a direct impact on the health goals - MDGs 4, 5 and 6.

Role of Partners and Implementation Modalities

The UN System will work with Government to: increase the resilience of vulnerable populations to climate change and natural disasters; decentralize responsibilities and competencies and so ensure that natural resource management and environmental governance are fully responsive to vulnerable populations; and promote low-carbon green growth and an enabling environment for equitable access to clean energy.

Pillar Five defines six areas for action:

- Ensure that key climate change, disaster risk reduction, and environmental issues are anchored in existing national plans and strategies, such as the *Bangladesh Climate Change Strategy and Action Plan*, the *National Action Plan for Adaptation* and the *National Biodiversity Strategy and Action Plan*.
- Integrate interventions within existing disaster risk reduction frameworks. In recent years, disaster management has been transformed by adopting a risk reduction perspective. There are opportunities to scale up these interventions and to ensure that there is no duplication.
- Strengthen partnerships within the UN System and with the Government in sustainable development. The strategy will include a strong public-private sector partnership component.
- Create awareness of environment, climate and social sustainability issues. This requires combining an understanding of problems with suggested solutions, and building the motivation and ability to take action. This also requires expanded partnerships with the media and civil society.
- Avoid a narrowly defined climate change agenda. Climatic impacts are intricately interconnected with underlying environmental quality and a matrix of socio-economic issues. Attacking climate change in isolation is futile and can distract from the larger goals. Unchecked traditional pollution, water stress and improper urbanization are potentially as detrimental as climate change in terms of MDG outcomes. A sound environment is inherently more resilient. Net economic returns and the poverty-environment-climate nexus should be among the key considerations in accelerating economic growth.
- Capture synergies and integrate efforts. Better coordination of UN System programmers and those of other development partners set a powerful example and can help to mainstream environmental issues.

The roles of UN partners will be as follows:

- UNDP will act as the lead agency, coordinating the activities of UNCT partners. Its direct interventions are substantial and target the parallel priorities given by: environmental degradation, climate change and disaster risk reduction and recovery, and energy and mitigation. The major interventions within each of priority areas respectively are: the Coastal Forestation Project, the Comprehensive Disaster Management Project (CDMP) and the Brick Kiln Efficiency Project.
- UNHCR will support Government efforts to enhance climate change adaptability around the refugee camps, and ensure that refugees and host communities have the capacity to prepare for and respond to natural disasters.
- FAO will support the Government (primarily the Ministry of Agriculture, the Ministry of Food and Disaster Management, and the Ministry of Fisheries and Livestock) in sustainable natural resources management in agriculture and social forestry and adaptation to climate change to attain sustainable food security.

- UNICEF will contribute to strengthening the national climate change policy framework to integrate health, nutrition, education, water and sanitation, child protection and HIV plans. This will include the development of sectoral strategies and guidelines, developing the capacities of national and sub-national mechanisms to ensure the availability of, and access to, basic services in vulnerable communities, thus enhancing resilience.
- UNESCO will support Government (primarily the Ministry of Education, the Ministry of Primary and Mass Education (MoPME), the Ministry of Information (Mol), and the Ministry of Cultural Affairs (MoCA) in improving science education at all levels, promoting indigenous knowledge and local practices to empower adolescent girls and young women. In addition it will undertake the capacity building of NGOs, communities and parents to adapt disaster/climate change, hazards, advocate for increasing awareness of science and technology education related to disaster risk reduction, and education in emergencies.
- UNEP will support Government efforts to mainstream poverty and environment into national and local plans, as well as in preparing and using scientific data in reporting on climate change to strengthen planning.
- IOM will provide assistance to vulnerable households, especially those displaced and affected by natural disasters, and/or climate change, and support rehabilitation of food insecure households.
- WFP will support the increased resilience of communities and individuals most affected by or at risk from natural disasters and/or climate change and ensure rapid provision of food assistance to victims of crises, including refugees. WFP's strong Vulnerability Analysis and Mapping (VAM) capabilities will ensure that resilience building and emergency preparedness are targeted to the areas most at risk of shocks and where food insecurity is most severe.
- UNFPA will contribute to strengthening national capacity on emergency preparedness and response, including facilitating the provision of services in crisis situations, to better address reproductive health and gender needs, and the prevention of gender based violence and assistance to survivors.
- UNIDO will support the Government, particularly the MoHFW, to develop rural energy services for the purpose of providing reliable energy for health centres and for productive purposes for rural communities. It will also support the MoHFW on hospital waste management and the MoEF on PCBs.
- In the areas of environment and water resources, IAEA will closely work with Bangladesh Atomic Energy Commission, Isotope Hydrology Division and Institute of Nuclear Science and Technology (INST) Atomic Energy Research Establishment (AERE). The programme will focus on characterization and source identification of particulate air pollution, establishing a benchmark for assessing the radiological impact of nuclear power activities on the marine environment in the Asia and Pacific region, application of isotope techniques for planning and management of water resources in coastal areas, assessment of trends in fresh water quality using environmental isotope and chemical techniques, and determination of radionuclide and trace elements in the sediment and seawater of South Eastern coast of Bangladesh.

UNDAF Pillar Six: Pro-Poor Urban Development

Overview

Bangladesh is experiencing a rapid urban transition with one of the highest rates of urbanization in the developing world. During the 1970s and 1980s, the urban population growth rate increased at between 6 and 7 per cent each year. Despite some decline, the rate remains high at 4 per cent per annum. Poverty and associated social problems remain serious challenges in almost all urban centres. Of an urban population of 34 million people, the BBS Household Income and Expenditure Survey (2005) found that 28.4 per cent (or 9.7 million) are poor while 14.6 per cent (or 5.0 million) live in extreme poverty.

Urban poverty differs from rural poverty in several ways. Urban poverty can generally be characterized by: inadequate income or economic assets that can generate income, including education; insecure land and housing tenure; inadequate infrastructure and services, including poor quality and overcrowded housing; lack of public services such as water, sanitation, solid waste collection, drainage, roads and footpaths which increase health and work burdens; high-density and high-risk environmental conditions which are linked to environmental hazards and increased crime rates; inadequate social capital, including limited or no social safety nets; isolation from extended family and traditional community ties.

While national progress towards the MDGs has been commendable, considerable spatial variations in outcomes exist. Stagnant economic conditions in some urban areas, particularly in low income and slum neighborhoods, are a particular concern. The problems arising out of an increasingly urbanized poor are formidable.

UN agencies have supported many urban poverty reduction programmers in the past. During the period between 1982-1995, UNICEF's slum improvement programme (SIP), improved slum environments, provided primary health care, and empowered poor women in over 185 slums in 25 cities and towns and reaching 40,000 women. From 2009, WFP's School Feeding Programme has assisted more than 80,000 children in slums and slum catchment areas in Dhaka city. Presently, the UNDP-led Urban Partnerships for Poverty Reduction (UPPR) project and the urban component of UNICEF's Sanitation, Hygiene Education and Water Supply Project are operative in a number of cities and municipalities (see further below). The design and impact of these past and ongoing interventions have informed this Pillar.

Results Expected & Rationale

Pillar Six addresses the national priorities on securing human resource development (education, health and population) and promoting environmental sustainability. In addition it addresses a range of MDGs: Goal 1 Halve Poverty and Hunger; MDG 3 Promote Gender Equality and Empower Women, and MDG 7 Ensure Environmental Sustainability. A key overriding theme is the need to secure equitable development within urban areas and to mitigate the worst effects of rapid urbanization.

The UN System has a clear comparative advantage in this area accumulated over many years of field delivery experience. The Urban Partnerships for Poverty Reduction Programme, led by UNDP and supported by UNHABITAT, ILO and UNICEF, is a community-based effort to improve the livelihoods and living conditions of three million poor people, especially women and children, in six cities and 24 municipalities. Between 2000 and 2007, the forerunner to UPPR - the Local Partnerships for Urban Poverty Alleviation Project worked in four cities and seven municipalities to reduce poverty through the empowerment of poor urban communities and capacity building of local governments. The urban component of UNICEF's Sanitation, Hygiene Education and Water Supply project draws on a wealth of past experience and is currently targeting 1.1 million people in 19 municipalities.

The intervention strategy focuses on major field interventions and therefore emphasizes capacity development and area-based programming. Additionally, to address the problems arising from an increasingly urbanized poor UN agencies will support at the policy level, the development of national and municipal plans and budget allocations that support the rights of the urban poor and vulnerable populations.

Key interventions include:

- Improving land tenure security and access to affordable housing for the poor;
- Enhancing the capacity of the urban poor and vulnerable populations to improve their socio-economic conditions;
- Increasing access to basic services and social protection programmes;
- Promoting democratic and pro-urban poor governance;
- Developing stakeholder capacity to plan and manage sustainable urban development.

The above interventions will contribute to significant improvements in the living conditions and livelihoods of the urban poor. This will in turn, increase the already significant contribution the urban sector makes to the national economy.

Pillar Six is closely linked with various interventions elsewhere within the UNDAF. There is a strong linkage with Pillar Three, particularly because improving basic services is an important output. In addition, there are strong linkages with Pillar Two in securing productive and decent employment opportunities and access to financial services; with Pillar Five on activities connected with environmental vulnerability and resilience; and with Pillar Seven with regard to efforts to secure economic equality between men and women.

Role of Partners and Implementation Modalities

Key Government partners are Local Government Division (LGD) under the Ministry of Local Government Rural Development and Cooperatives, the Ministry of Housing and Public Works, the Ministry of Environment and Forestry, the Ministry of Primary and Mass Education, and the Ministry of Health and Family Welfare. The role and partnership with respective municipality and city corporation authorities are also critical to success.

The contributions of the respective UN agencies are as follows:

- UNDP will: act as lead agency coordinating the inputs of others; and directly leverage its existing partnership with UN Habitat, ILO and UNICEF to devise a major joint programme to maximize

effectiveness. This will be achieved in close collaboration with relevant Government institutions and town/city authorities, various national and international partners, and civil society organizations including community organizations. UNDP will support institutional capacity and good governance practices on both the supply and demand side, as well as offering evidence-based policy advocacy at the higher level.

- UNICEF will contribute to strengthening governance capacity in city corporations and municipalities for the delivery of water supply, sanitation, solid and liquid waste management, primary health care, primary and secondary education, child protection and HIV prevention services to the urban poor, especially children and women living in slums. This will be undertaken in close collaboration with civil society organizations and via community engagement. These efforts will assist in the development of evidence-based policies, strategies and guidelines.
- WFP will support the Government in achieving its education goals, particularly in improving enrolment and attendance in primary schools and achieving greater completion rates, especially for children from very poor families in urban slum catchments. WFP will assist the Government through the School Feeding programme and will work closely with Ministry of Primary and Mass Education, and other development partners. WFP will also contribute to strengthening the Government's capacity to implement its national school feeding programme to assist poor children. In view of increasing evidence of a causal connection between poverty and poor nutritional status among urban poor households, particularly affecting women and children, WFP has outlined an urban food security strategy. WFP will also explore ways of introducing new approaches to urban safety nets and safety ladders, and innovative nutrition interventions for women and children under 2.
- ILO will contribute to the elimination of the worst forms of child labour in the urban informal economy through an integrated approach; and by boosting employment creation and poverty alleviation through Local Economic Development (LED) approaches.
- IOM will work with the Ministry of Expatriates Welfare and Overseas Employment (MoEWOE) and its line agency Bureau of Manpower and Training (BMET) in taking forward the objectives and activities. IOM will provide technical support both in policy reform and in implementation and the translation of policy into action. It also includes building the capacity of the Ministry and BMET by developing training facilities for migrant workers.
- UNFPA will support the urban primary health care sector programme, which is a major public-private partnership delivering primary health care in urban areas. UNFPA specifically contributes to strengthening capacity of city corporations, municipalities and partner NGOs in providing comprehensive reproductive health care services to the urban dwellers and especially to the urban poor.

UNDAF Pillar 7: Gender Equality and Women's Advancement

Overview

Bangladesh has made significant progress in recent decades when it comes to gender equality and women's participation and opportunities in both public and private spheres of society, as the eradication of poverty, with special attention to the 'feminization' of poverty, has been an important agenda addressed by Government, NGOs and private sector (social business). The rapid expansion of the garment industry has provided a large number of formal sector jobs for women, where women account now for 90 percent of the labour force. Bangladesh also achieved gender parity in primary and secondary school enrolment. And, there have been notable improvements in the political domain as well, with a rise in the share of reserved seats for women and the number of directly elected women parliamentarians. Positive changes as reflected in norms, practices and opportunities are the results of a range of forces, including political leadership as embodied in Government policies, advocacy and innovation by civil society organisations and the actions of individuals and households.

Major challenges remain as evidenced by the mixed picture presented in the MDG 3 Country Analysis. Despite the tremendous opportunities created by the growth of RMG industry, issues related to equal wage, promotion, accommodation and transportation, age at work, quality of lives as well as health issues, remain the main concerns for professional women. Women's economic opportunities beyond the RMG sector continue to be limited by such factors as discrimination in the labour market, limited access to market-relevant training, high level of illiteracy and poor education level, and household work burdens. Also, the MDG target related to women's economic empowerment remains off track as shown in the relative decline of women's share in non-agricultural employment (down from 23 per cent in 1995-6 to 20 per cent in 2005-6). Moreover, while access to education has improved, the high drop-out rate among girls in schools is a major concern. Gender parity at tertiary education level is very low at 0.32. In addition, a

large disparity still exists between male and female adult literacy rates. One of the constraining factors for enrolment, retention, and performance of girls is the risk of sexual harassment and violence on the journey to school and within schools. Similarly, despite the increase in women's political participation, it remains a challenge for women who have entered the political arena to influence public decision-making, as a result of both lack of experience and continuing resistance from male colleagues. In addition, major efforts are needed to achieve the MDG target of a third of the parliamentary seats to be held by women. This would involve a threefold increase of women parliamentarians from the current 64 to 172 within the next 5 years. Violence against women and early marriage are the persistent and prevalent factors underpinning women's vulnerabilities in Bangladesh. Between 60 and 70 per cent of Bangladeshi women have reported sexual and/or physical violence. Though the law prohibits marriage before the age of 18, the MICS of 2008 revealed 33 per cent of women aged 15-49 were married before their fifteenth birthday. Despite concerted efforts made to date to improve the socio-economic and cultural situation and status of women, major bottlenecks remain, such as the culturally, socially, and religiously deep-rooted gender norms that promote gender inequality and condone gender-based violence, based on which individual and societal attitudes and behaviors are constructed. The increased incidence of violence against women, coupled with improved access to education and employment for women, suggests that men have difficulties adapting to the new realities of a rapidly changing society and points to the need for a more holistic approach in addressing the complexity of this problem.

Results Expected and Rationale

The MDG analysis has revealed that broad challenges remain in terms of gender equality and women's advancement. Equally notable is the significance of these challenges to the country. Bangladesh ranks poorly on the Gender Inequality Index (GII) at 116th out of 137 countries (UNDP Human Development Report, 2010). The Government of Bangladesh identifies 'Realizing Gender Equality and Empowerment' as one of the seven priority areas in the Outline Perspective Plan and the Sixth Five-Year Plan. In this context, the UNCT regards gender equality and women's advancement as 'the issue' that requires urgent and foremost attention. The decision has been taken accordingly for the UNDAF to adopt both gender mainstreaming and vertical gender programming strategies. This two-fold approach will enable the UN System in Bangladesh to make focused efforts to combat some of the challenges identified, while integrating a gender perspective into all sectors and all phases of sectoral planning cycles, so women will be able to enjoy the same opportunities as men and in turn, Bangladesh will be able to take full advantage of their contributions to the growth and development of the economy and society.

Pillar 7 addresses the national priority on realizing gender equality, MDGs 2, 3 and the Millennium Declaration. In achieving gender equality and women's advancement, it is recognised that three interrelated dimensions should be looked at:

- 1) **Capabilities:** these are the basic human abilities, measured by education, health and nutrition. It is the means through which individuals access other forms of well-being.
- 2) **Access to resources and opportunities:** these refer to equality in the opportunity to use, or apply, basic capabilities through access to economic assets, as well as political opportunity.
- 3) **Security:** this brings reduced vulnerability to violence and coercion, factors that keep women and girls in 'their place' through fear.

As a major advocate for gender equality and possessing considerable programming experience across the full span of its mandated activities, the UN System is ideally placed to address these issues. The strategy seeks to refocus interventions on the policy level to affect genuine policy and institutional change. This will be undertaken alongside the hardwiring of gender concerns within mainstream programming, where issues of capacity and systems strengthening are addressed.

Among the above mentioned dimensions, the first dimension, especially gender equality in access to education, is an important precondition for women's empowerment, and it appears as an output rather than outcome in this pillar. While the second dimension focuses on women's economic and political empowerment and participation, Pillar 7 does not address directly the women's political participation. This is covered under Pillar 1, as it involves a broad governance agenda, which is more than gender specific issues. As such, Pillar 7 aims to achieve primarily the two outcomes around women's economic empowerment (dimension 2) and reduction of vulnerabilities related to violence against women and harmful traditional practices (dimension 3). The two outcomes read as follows: 1) Increased participation of marginalized and disadvantaged women in selected districts and urban slums in wage employment and any other income generating activities; and 2) Social and institutional vulnerabilities of women including the marginalized and disadvantaged are reduced. The results will be achieved through field level

interventions in selected districts and urban slums, as well as upstream policy advocacy and system strengthening work at national level. As the availability of gender disaggregated data, especially at sub-national level, is the main constraint at present, baseline data for many of the indicators in this pillar are lacking and will be collected during the UNDAF baseline study. For the same reason, strengthening of the management information system in this area is included as one of the key expected outputs.

Role of Partners and Implementation Modalities

UNFPA as lead agency will coordinate the comparative advantages of other UN agencies as follows:

- UNFPA will focus on the promotion of social change toward gender equality and women's empowerment and in the area of capacity strengthening to ensure protection services for the survivors of gender-based violence. Engaging men and boys will be a central strategy to the social change interventions.
- UNDP will promote gender mainstreaming and women's empowerment within all of its interventions. This will include: *engendering* policies, strategies and legislation; strengthening women's political and social empowerment; and creating economic uplift for women. These efforts target the most vulnerable women in the areas of democratic governance, human rights and justice, local governance, urban and rural poverty reduction, disaster response, climate change and sustainable environment
- UN WOMEN (now part of UN Women) will support: inter-governmental bodies (e.g. Commission on the Status of Women) in the formulation of policies, global standards and norms, and help Member States to implement these standards with suitable technical and financial support, as well as forging effective partnerships with civil society. UN WOMEN will help the UN System to be accountable for its own commitments on gender equality including regular monitoring of system-wide progress.
- UNICEF will support gender equality in accessing services as well as changing social norms. Particular areas of concern are violence against women and child marriage. UNICEF will also support the relevant national authorities to strengthen their capacity to deliver life skills for secondary education in a gender-friendly environment in close collaboration with civil society organizations and community involvement in the selected districts. It will assist in the development and revision of evidence-based policies, strategies and guidelines.
- UNESCO will work with the Ministry of Education (MoE) and the Ministry of Primary and Mass Education (MoPME) to contribute to technical education, advocate for policy changes, and strengthen national political commitment to improve the status of girl's education.
- ILO will support promoting gender mainstreaming in the workplace and promote international standards on gender equality.
- IOM will collaborate with relevant Government and non-governmental organizations to ensure that all activities implemented are gender sensitive and cater to the needs of both men and women.
- UNAIDS will work on female trafficking issues in collaboration with UN WOMEN and other agencies, advocate for acknowledging women leadership-to raise their voice and support coordination among key stakeholders to strengthen gender-based programmes in the national strategic planning process.
- UNHCR will partner with national authorities and civil society organizations to strengthen women's empowerment and prevent and respond to gender-based violence in and around the refugee camps.
- WHO will provide advocacy, research and policy support to reduce inequality in accessing modern health care and also to work in mainstreaming gender and health issues.

Additional Actions to Support the UNDAF

The UN System establishes and assists in the implementation of a wide range of international norms and standards. Some interventions may fall outside the parameters set by the UN development framework and include standards for the treatment of refugees and stateless persons, international norms governing public health, environmental protection, food and nutrition, labour and employment and a range of other key areas.

UNAIDS will support:

- UNJT efforts.
- Capacity development and increase involvement of People Living with HIV and AIDS.
- Advocacy on HIV/AIDS at policy level amongst Government counterparts and other development partners

focusing on areas where greater impact is needed for the period of 2011-2016.

- UNAIDS' contribution towards these interventions will be \$3.75 M for the period 2012-2016.

FAO will support:

- Formulation, implementation and monitoring of policies on food security, agriculture, and nutrition.
- Agricultural development and food security through regional and national master plans.
- Extension services responding to farmers' needs (FFS – Integrated Farming Systems) in the context of climate change.
- Law enforcement on food safety and food security.
- National statistics on agriculture, livestock, fisheries and forestry.
- Reduction of the impact of trans-boundary / endemic animal diseases (e.g.: avian influenza, anthrax), and other endemic environmental threats, including arsenic contamination.⁶

- FAO's estimated contribution towards these interventions will be \$3M for the period of 2012-2016.

UNWOMEN will support:

- Framing of a NAP on implementing SCR 1325 and the women's movement in events like CSW meetings, BPfA follow-ups.
- Capacity development in preparing reports to CEDAW committee.
- Government fulfillment of national and international commitments on gender equality (FYP, gender responsive budgets).

IAEA will support:

- Development of comprehensive capacity, including nuclear techniques for effective characterization and source identification of particulate air pollution in urban zones.
- Application of isotope techniques in the planning and management of water resources and assessment of trends in water quality.

- IAEA's estimated contribution towards these interventions will be \$0.7M for the period of 2012-2016.

⁶ Avian Influenza Unit: contributes to reducing the loss of income source for poultry farmers by preventing HPAI H5N1 outbreaks (pillar 2), through protecting poultry industry (pillar 4), and through assisting backyard farming which provides women with a rare opportunity for income generation in rural areas allowing women active participation in financial contribution to the family and giving women economic independence (pillar 7).

Estimated Resource Requirement

	Pillar 1	Pillar 2	Pillar 3	Pillar 4	Pillar 5	Pillar 6	Pillar 7	TOTAL	TOTAL	TOTAL
								Funded	Unfunded	
FAO	0	8.6M	0	72.0M	26M	0	0	38.9M	67.7M	106.6M
ILO	1M	15M	12.8M	0	1M	6M	0	15.8M	20M	35.8M
IAEA	0	0	1.9M	1.4M	0	0	0	2.6M	0.7M	3.3M
IOM	1M	5.2M	2.82M	1M	3.5M	0.1M	1.3M	3.325M	11.6M	14.925M
UNAIDS	0.15M	0	3.5M	0	0	0	0	3.65M	0	3.65M
UNCDF	24.36M	0	0	0	0	0	0	14.36M	10M	24.36M
UNDP	158M	145M	0M	0	143.5M	100M	7M	242.6M	310.9M	553.5M
UNEP	0	0	0	0	0.89M	0	0	0.73M	0.16M	0.89M
UNESCO	0.25M	0.5M	4M	0	0.5M	0	1M	2.34M	3.91M	6.25M
UNFPA	5.5M	4.2M	42M	0	1.5M	3M	12M	49.2M	19M	68.2M
UNHCR	8.5M	0	9M	3.5M	6M	0	5M	32M	0	32M
UNICEF	8.5M	<i>See Pillar 3</i>	338M	90M	8.8M	<i>See Pillar 3</i>	48M	90.5M	402.8M	493.3M
UNIDO	0	12M	0	0	0.5M	0	0	12.5M	0	12.5M
UN WOMEN	0	0	0	0	0	0	2M	0	2M	2M
UNODC	0	0	4.5M	0	0	0	0	4.5M	0	4.5M
WFP	0	10M	0.032M	150.5M	150M	9.5M	0	320.03M	0	320.03M
WHO	0	0	58.75M	5.5M	0	0	0.7M	60.95M	4M	64.95M
TOTAL	207.2M	200.5M	477.3M	323.9M	342.1M	118.6M	77M	893.9M	852.7M	1746.7

* All figures are in USD and indicative only

Monitoring and Evaluation

	2012	2013	2014	2015	2016
UNCT M&E activities					
Surveys/studies	UNDAF Output Survey (BBS/UN) Child Risk measure survey (UNICEF)	UNDAF Output Survey (BBS/UN) Child Risk measure survey (UNICEF)	UNDAF Output Survey (BBS/UN) Child Risk measure survey (UNICEF)	UNDAF Output Survey (BBS/UN) Food Security and Nutrition Cluster Survey (WFP/FAO) Child Risk measure survey (UNICEF)	UNDAF Output Survey (BBS/UN) Child Risk measure survey (UNICEF)
Monitoring systems	HMIS (GoB) EMIS (GoB) BD Info BMET (GoB)	HMIS (GoB) EMIS (GoB) BD Info BMET (GoB)	HMIS (GoB) MIS (GoB) BD Info BMET (GoB)	HMIS (GoB) EMIS (GoB) BD Info BMET (GoB)	HMIS (GoB) EMIS (GoB) BD Info BMET (GoB)
Evaluations	Violence Against Women Joint Programme (UNFPA) Food and Nutrition Joint Programme (WFP) Joint Initiative (UNICEF) - TBC	Bi-annual evaluation (UN Specialized Agencies)	Country Programme Mid term Evaluation (UN ExCom Agencies)	Biannual evaluation (UN Specialized agencies) Final evaluation of Joint Programme on reduction of Maternal and Neonatal Mortality and Morbidity (UNFPA)	Country Programme Evaluation (UN ExCom Agencies)
Reviews	UNDAF Annual reviews	UNDAF Annual reviews	UNDAF Annual reviews	UNDAF Annual reviews	UNDAF Annual reviews
Planning references					
UNDAF evaluation milestones				Start of Country Analysis preparation for 2017 UNDAF	UNDAF End-of-cycle Evaluation
M&E capacity development	BD Info (DevInfo) training	BD Info (DevInfo) training	BD Info (DevInfo) Training	BD Info (DevInfo) Training	BD Info (DevInfo) Training

Use of information	MDG Progress Report (GoB) EFA GMR UNGASS CRC State Report	EFA GMR	MDG Progress Report (GoB) EFA GMR UNGASS	EFA GMR	EFA GMR MDG Progress Report (GoB) UNGASS
Partner Activities	MICS (BBS) EPI Coverage Survey SVRS (GoB) UGC (GoB) BANBEIS (MoE) BMET (MoEWOE)	SVRS (GoB) EPI Coverage Survey UGC (GoB) BANBEIS (MoE) HSS BSS LFS	SVRS (GoB) EPI Coverage Survey UGC (GoB) BANBEIS (MoE) BDHS (MoH)	MICS (BBS) EPI Coverage Survey SVRS (GoB) UGC (GoB) BANBEIS (MoE) HIES	SVRS (GoB) EPI Coverage Survey UGC (GoB) BANBEIS (MoE) BBS

Annex I: UNDAF Results Matrices

UNDAF Pillar One: Democratic Governance and Human Rights

National Priority:	Better Governance to Defend Rights and Tenets of Justice				
Millennium Development Goal:	Millennium Declaration MDG 3: Promote Gender Equality and Empower Women				
Outcome	Indicators, Baseline, Target	Means of Verification	Risks and Assumptions	Partners	Indicative Resources
OUTCOME 1: Government institutions at the national and sub-national levels are able to more effectively carry out their mandates, including delivery of public services, in a more accountable, transparent, and inclusive manner	<ul style="list-style-type: none"> ▪ Public trust in the credibility of elections⁷ (Baseline 2008: 80%; Target 2014: above 80%) ▪ Civil Service Act Enactment and revised rules approved (Baseline 2011: no legal frames target 2014: Law passed) ▪ % of women in civil service in senior management positions (Joint/Secretary and above) (Baseline 2010: 8%; Target 2016: 20%) 	<ul style="list-style-type: none"> ▪ International and National Election Observer reports ▪ UN Surveys on Parliament ▪ Bangladesh Election Commission reports ▪ UN reports ▪ Government gazette ▪ Annual report from Prime Minister's Office ▪ Ministry of Establishment statistics 	<ul style="list-style-type: none"> ▪ Independence of the Election Commission is supported through adequate resource allocation and a lack of political interference (A) ▪ Credible voter registration and the electoral management process are maintained (A) ▪ Politicized appointments to Election Commission in 2011 (R) ▪ Opposition focuses on politics outside Parliament, such as Hartals (R) ▪ Frequent transfer of civil servants (R) ▪ Resistance to Civil Service Act (R) ▪ Politicization of civil service (R) ▪ Politicization and corruption may hinder improvement in public service delivery (A) ▪ Upazilas not being able to function due to influence and control of local members of parliament 	Political Parties EC Civil Society MoEstab. LGD	UNDP: RR - \$16M OR (funded) - \$33.6M OR (unfunded) - \$58.4M UNCDF: RR - \$2.5M OR (funded) - \$11.86M OR (unfunded) - \$10M UNESCO: RR - \$0.09M OR (unfunded) - \$0.16M UNFPA: RR - \$3M OR (unfunded) - \$0.5M UNHCR: RR - \$2.5M UNICEF: RR - \$3.5M OR (unfunded) - \$5M IOM: OR (funded) - \$0.1M OR (unfunded) \$0.15M
Output 1.1 The Election Commission	<ul style="list-style-type: none"> ▪ No. of citizens registered at server stations (Baseline 2010: 	<ul style="list-style-type: none"> ▪ UN annual project report 	<ul style="list-style-type: none"> ▪ Independence of the Election Commission (A) 	EC	UNDP: RR - \$2M

⁷ National: Election Working Group; International: European Union Observer Group

has increased capacity to conduct credible elections	4.7M; Target 2016: 14.7M)	<ul style="list-style-type: none"> Bangladesh Election Commission reports 	<ul style="list-style-type: none"> Credible voter registration and the electoral management process (A) Limited transfers of staff (A) The tenure of the current commissioners expire in 2011 (R) Commission is overstretched by national ID card (R) 		OR (funded) - \$12M OR(unfunded) - \$14M
Output 1.2 The Bangladesh Parliament has improved capacity to exercise oversight and representation functions	<ul style="list-style-type: none"> Standing Committees rules of procedure revised to facilitate the oversight and public engagement responsibilities (Baseline 2010: no; Target 2012: yes) 	<ul style="list-style-type: none"> Rules of procedure UN project annual reports 	<ul style="list-style-type: none"> Limited transfer of staff (A) Necessary budget allocation to ensure sustainability (A) Opposition boycotts (R) Resistance from senior civil servants to an independent Secretariat (R) 	Bangladesh Parliament	UNDP: RR - \$3M OR (funded) - \$3.3M OR (unfunded) - \$3.4M UNFPA: RR - \$1M
Output 1.3 Civil society and media are better able to promote participation of people in democratic processes and public dialogues	<ul style="list-style-type: none"> No. of articles and news stories in the media covering targeted issues 	<ul style="list-style-type: none"> UN annual project reports Examination of media related laws in comparison with international standard laws Annual report of Press Council 	<ul style="list-style-type: none"> The media and civil society can play a crucial role in providing discussion and debate about these issues. (A) Deterioration in media freedom (R) Lack of independence of civil society groups (R) Media is politically polarized and political will to promote press freedom is lacking (A & R) Journalist are not sensitized enough to play a catalyst role for ensuring good governance and development in the society Deterioration in media freedom (R) Lack of independence of civil society groups (R) 	Media Think tanks Civil Society Political Parties Journalism Associations Press Institute of Bangladesh Department of Mass Communication Bangladesh Shishu Academy Mol	UNDP: RR - \$1M OR (unfunded) - \$5M UNICEF: RR - \$0.5M OR (unfunded) - \$2M UNESCO: RR - \$0.09 OR (unfunded) - \$0.16 IOM: OR (funded) - \$0.1M OR (unfunded) - \$0.15M
Output 1.4 The civil service has greater institutional capacity and better business processes	<ul style="list-style-type: none"> No. of ministries (including related field offices) responsible for basic service delivery with performance indicators and a monitoring system (Baseline 2010: 0; Target 2016: 5) 	<ul style="list-style-type: none"> Media reports Statistics of Ministry of Establishment Citizen's report card 	<ul style="list-style-type: none"> Political bias in selection, appointment and promotion (R) Inadequate capacity to measure improvement against performance indicators (R) Inadequate capacity may result in poor implementation of government policies (A) Women advancement may be perceived as a kind of threat by their male counterparts (A) 	MoEstab PMO Cabinet Division	UNDP: RR - \$3M OR (funded) - \$0M OR (unfunded) - \$4M

<p>Output 1.5 Selected local government mechanisms⁸ have improved capacity to deliver public services</p>	<ul style="list-style-type: none"> ▪ No. of Unions and Upazillas (sub-districts) in selected areas that have functional coordination forums, addressing communities' demands for quality services and promoting dialogue between service providers and community members 	<ul style="list-style-type: none"> • Union/Upazila coordination committee (e.g. UFHPC) meeting reports ▪ List of endorsed micro plans of CCMC in annual programme progress report of DGHS/DGFP or programmer report 	<ul style="list-style-type: none"> ▪ Corruption is widespread and collection of local revenue does not reach the designated institutions (R) ▪ Continued centralized administration and control (R) ▪ GOB policy not in favor of enhancing local revenue for political reasons (A) 	<p>MoLGRD&C</p>	<p>UNDP: RR - \$4M OR (funded) - \$18.3M OR (unfunded) - \$10M</p> <p>UNCDF: RR - \$2.5M OR (funded) - \$11.86M OR (unfunded) - \$10M</p> <p>UNICEF: RR - \$3M OR (unfunded) - \$3M</p> <p>UNHCR: RR - \$2.5M</p> <p>UNFPA: RR - \$2M OR (unfunded) - \$0.5M</p>
<p>Output 1.6 Authorities from the government and private sector make better use of technology to benefit under-served communities</p>	<ul style="list-style-type: none"> ▪ No. of citizens with access to government e-solution services (Baseline 2010: 0.5M; Target 2016: 20M) 	<ul style="list-style-type: none"> ▪ Prime Minister's Office annual report on Digital Bangladesh 	<ul style="list-style-type: none"> ▪ Political discontinuity may reduce high-level of interest (R) ▪ Global financial crisis and any food price hike etc. can drain out resources from this sector (R) 	<p>PMO MoSICT</p>	<p>UNDP: RR - \$3M OR (unfunded) - \$22M</p>
<p>OUTCOME 2 Justice and human rights institutions are strengthened to better serve and protect the rights of all citizens, including women and vulnerable groups</p>	<ul style="list-style-type: none"> ▪ % of citizens who are satisfied with law and order service providers (Baseline 2009: 45%; Target: 2016: 55%) ▪ No. of recommendations made by 2008 Universal Periodic Review implemented (Baseline 2010: 0; Target 2016: 15) ▪ No. of case backlog reduced (Baseline 2010: 1.6 M; Target 2016: below 1M) 	<ul style="list-style-type: none"> ▪ BRAC Institute of Governance Studies State of Governance ▪ BRAC Institute of Governance Studies State of Governance ▪ Project perception surveys 	<ul style="list-style-type: none"> ▪ Government does not prioritize reform of the justice sector (R) ▪ The law and order situation worsens (R) ▪ Reforms will face resistance from vested interests (A) ▪ Incentive structures do not promote inter-agency collaboration in this sector (A) 	<p>MoHA MoLJ&PA Judiciary Bangladesh Police</p>	<p>UNDP: RR - \$9M OR (funded) - \$19M OR (unfunded) - \$22M</p> <p>UNFPA: RR - \$1.5M OR (unfunded) - \$0.5M</p> <p>ILO: OR (funded) - \$1M</p> <p>UNAIDS: RR - \$0.125M OR (funded) - \$0.025M</p> <p>UNHCR: RR - \$6M</p> <p>IOM: OR (unfunded) - \$0.75M</p>
<p>Output 2.1 Members of key justice</p>	<ul style="list-style-type: none"> ▪ Coordination body for the National Strategy for the 	<ul style="list-style-type: none"> ▪ Nation Strategy document 	<ul style="list-style-type: none"> ▪ Lack of awareness about legal aid (R) 	<p>Judiciary</p>	<p>UNDP: RR - \$3M</p>

⁸ Union Parishad, Upazilla Parishad and Hill District Councils

sector institutions have increased capacity for sectoral planning, coordination and legal aid	Justice Sector established (Baseline 2010: no; Target 2016: yes) <ul style="list-style-type: none"> % of utilization of legal aid budget per year (Baseline 2010: 25%; Target 2016: 50%) 	<ul style="list-style-type: none"> Coordination body meeting minutes MinLaw Annual Reports 	<ul style="list-style-type: none"> Lack of networking between legal aid and NGO legal aid services (R) Incentive structures do not promote inter-agency collaboration 	MioLJ&PA MoHA	OR (funded) - \$5M OR (unfunded) - \$3M
Output 2.2 The rural poor and refugees benefit from strengthened local justice mechanisms	<ul style="list-style-type: none"> No. of village courts providing justice (Baseline 2010: 224 village courts; Target 2016: 500) % of cases resolved by refugees to camp management committee (Baseline 2009:64%; Target: 2016: 75%) 	<ul style="list-style-type: none"> UN data 	<ul style="list-style-type: none"> Corruption (R) NGOs can help Government establish sustainable base for village courts (A) Village courts can provide better access to justice at local level than other forms due to closer monitoring and transparent judgments (A) 	MoLGRD&C	UNDP: RR - \$2M OR (funded) - \$4M OR (unfunded) - \$9M UNHCR: RR - \$1M
Output 2.3 Authorities from key law enforcement agencies ⁹ are more service oriented and more sensitive to gender and human rights, and equity issues	<ul style="list-style-type: none"> No. of female victims of crime supported with improved victim support services (Baseline 2009: 500; Target 2016: 7,000) 	<ul style="list-style-type: none"> UN annual project reports Victim Support Centre records 	<ul style="list-style-type: none"> Politicization and external influence in day-to-day police operations may worsen (R) Meaningful reform can take place in the absence of new legislation (A) 	Bangladesh Police MoHA Prison officials and Border Guards	UNDP: RR - \$3M OR (funded) - \$7M OR (unfunded) - \$8M IOM: OR (unfunded) - \$0.75 M UNICEF: Resource contribution of OR unfunded - \$1.5 M, part of Pillar 3, Outcome 2, Output 2.1. & 2.2. UNHCR: RR - \$2M UNFPA: RR - \$1.5M OR (unfunded) - \$0.5M
Output 2.4 Members of key oversight institutions ¹⁰ and civil society organizations have strengthened capacity to better promote equity and protect human rights	<ul style="list-style-type: none"> No. of human rights investigations referred to government agencies from the National Human Rights Commission that were resolved (Baseline 2010: 70; Target 2016: 4000) 	<ul style="list-style-type: none"> National Human Rights Commission annual reports UN reports 	<ul style="list-style-type: none"> Independent institutions face political pressure (R) Government does not prioritize RTI (R) The Commissions will be adequately staffed and resourced (A) 	NHRC Right to Information Commission Civil Society	UNDP: RR - \$1M OR (funded) - \$3M OR (unfunded) - \$2M UNAIDS: RR - \$0.125M OR (Funded) - \$ 0.025M UNHCR: RR - \$1M

⁹ including Bangladesh Police, Border Guards, Ansar, Village Police, immigration and prison officials

¹⁰ National Human Rights Commission, Right to Information Commission, Child Ombudsman/Commissioner

					ILO: OR - \$1M
Output 2.5 Children who come into contact with the law as victims, witnesses and offenders benefit from improved justice and security systems that serve to end impunity for crimes against children	<ul style="list-style-type: none"> ▪ % of perpetrators of crimes against children sentenced by courts of law (2011: Baseline -Database "Victim" to be developed by IOM and Police HQ) ▪ Three child-friendly children acts in the country drafted¹¹ (Baseline 2010: no; Target 2015: yes) 	<ul style="list-style-type: none"> ▪ DB "Victim" (to be developed by 2011 by Police HQ and IOM) ▪ Report of the Juvenile Justice Indicator Measurement ▪ Report of the Police Headquarters (cell) and Office of the Registrar of the Supreme Court ▪ Published laws in the official gazette 	<ul style="list-style-type: none"> ▪ GoB remains committed to children's rights (A) ▪ Consensus for legal reform (A) 	MoLJ&PA MoWCA MoHA MoSW MoLJ&PA Civil Society	UNICEF: Resource contribution of OR unfunded – (\$1,250,000 – part of Pillar 3, Output 2.1. & 2.2.) UNHCR: RR - \$2M

¹¹ a) Children Act 2010 drafted, b) Draft Vagrancy Act kept children out of its purview, c) Children policy 2010 drafted

UNDAF Pillar Two: Pro-Poor Growth with Equity

National Priority:	Boosting Production, Income and Reducing Poverty				
Millennium Development Goal:	MDG 1: Eradicate Extreme Poverty and Hunger MDG 3: Promote Gender Equality and Empower Women MDG 8: Develop a Global Partnership Millennium Declaration				
Outcome	Indicators, Baseline, Target	Means of Verification	Risks and Assumptions	Partners	Indicative Resources
OUTCOME 1 Economic growth is achieved in an inclusive manner, extending opportunities to the rural and urban poor and protecting the vulnerable from shocks	<ul style="list-style-type: none"> ▪ Per Capita GDP growth at constant prices (Baseline 2008/09: 4.55%; Target 2016: 6%) ▪ Labour force participation rate, disaggregated by gender (Baseline: 2005-2006 for men 86.8%, for women 29.2%, overall 58.5%; Target 2016: for men 87% , for women 43%, overall 65%) ▪ % of poorest quintile in national consumption (Baseline 2005: 5.3%; Target 2016: 6.4 %) ▪ % of GDP accounted for by public educational & health spending (Baseline 2007: 4.7%; Target 2016: to outperform South Asian regional value) 	<ul style="list-style-type: none"> ▪ BBS ▪ Labour Force Survey (LFS) ▪ HIES ▪ World Bank WDI series ▪ Desk review based on outturn figures of national accounts 	<ul style="list-style-type: none"> ▪ Stable international economy (A) ▪ Sustained economic growth of 5.5% (A) ▪ Further deteriorations in the size and spatial distributions of income (R) ▪ Climate change does not have a high immediate effect (A) ▪ Continuous high degree of export growth (A) ▪ Growing international market and supply of capital (A) ▪ Competitiveness, dominance of industrial sector, and potential for conflict with perspective plan (R) ▪ Further deteriorations in the size and spatial distributions of income (R) 	GED (Planning Commission) MoL IRA MoSW MoCHTA MoFHW Local Governments ERD MoA MoLF MoI PKSF MoTJ DoF BSTI LGED	UNDP: RR - \$10M OR (funded) -\$25M OR (unfunded) -\$110M UNFPA: RR - \$0.2M OR (funded)- \$4M UNICEF: OR (unfunded) – (\$4M but shown under Pillar 3, Outcome 2) WFP: RR - \$10M FAO: OR (funded) - \$1.10M OR (unfunded) - \$7.50M ILO: OR (funded) - \$5M OR (unfunded) - \$10M UNESCO: RR- 0.1M OR- (unfunded) \$0.4M UNIDO: RR - \$1.2M OR (funded) - \$10.8M IOM:

					OR (funded) - \$1M OR (unfunded) - \$4.2M
Output 1.1 The vulnerable and poor are provided with decent and productive employment opportunities in domestic and overseas markets ¹²	<ul style="list-style-type: none"> ▪ % of trained individuals who are employed or self-employed (disaggregated by sex) (Baseline 2010: n/a; Target 2016: 10% increase on baseline) (Baseline 2010: n/a; Target 2016: 0%) ▪ Proportion of workers going overseas via official channels (Baseline 2010: 328,000 Est.; Target 2016: base plus 20%) 	<ul style="list-style-type: none"> ▪ UN survey in 2011, 2013 and 2015 ▪ No of workers going overseas recorded in Migration Survey (BBS) ▪ LFS ▪ NDSC Data Cell Report ▪ BMET and DTE reports ▪ Social compliance orders ▪ ILO reports ▪ ILOEX ▪ IOM world migration report 	<ul style="list-style-type: none"> ▪ Job market situation improves (A) ▪ Global shocks impact export demands (R) ▪ Global trading conditions & demand for labour in overseas host markets worsens and/ or access is restricted (R) ▪ Political commitment to better social compliance maintained (A) 	MoL MoEWOE MoTJ BMET BTEB BEF TUs BAIRA MoFA BGNEA BKNEA	UNDP: RR - \$3M OR (unfunded) - \$2M ILO: OR (funded) - \$5M OR (unfunded) - \$10M IOM: OR (funded) - \$1M OR (unfunded) - \$4.2M
Output 1.2 Poor families are less vulnerable to external shocks through greater access to financial and insurance services, social safety nets with clear graduation strategies	<ul style="list-style-type: none"> ▪ National strategy for social safety net graduation prepared (Baseline 2010: no; Target 2012: yes) ▪ No. of poor households benefiting from Social Safety Nets (Baseline 2005: 15.5%; Target 2015: 25%) 	<ul style="list-style-type: none"> ▪ Annual UN project reports ▪ UN project monitoring system ▪ National strategy document ▪ HIES 	<ul style="list-style-type: none"> ▪ Insurance Regulatory Authority (IRA) to be formed under new Insurance Act (A) ▪ IRA works effectively (A) ▪ Continuous high level of demand form development partners to promote graduation (A) 	IRA MoSW MoFDM MoTJ	UNDP: RR - \$5M OR (unfunded) - \$26M UNICEF: OR (unfunded) – (\$2.5M but shown under Pillar 3, Output 2.1) WFP: RR - \$10M FAO: OR (funded) - \$0.1M OR (unfunded) - \$1M
Output 1.3 Vulnerable and disadvantaged populations ¹³ gain better	<ul style="list-style-type: none"> ▪ National policy drafted that promotes community based management of productive common pool resources¹⁵ 	<ul style="list-style-type: none"> ▪ National policy document ▪ Annual UN project 	<ul style="list-style-type: none"> ▪ Local government institutions taking lead in local development (A) 	Local Governments MoCHTA MoFHW	UNDP: OR (unfunded) - \$10M UNICEF:

¹² Decent as defined by ILO conventions on employment and workers' rights.

¹³ Includes youth and women.

access to productive resources ¹⁴	(Baseline 2010: no; Target 2013: yes)	reports		MoA	OR (unfunded) – (\$ 0.5 M but shown under Pillar 3, Output 2.2) FAO: OR - (unfunded) - \$3M
Output 1.4 Government and non-government stakeholders have the capacity to improve aid effectiveness with a special focus on achieving the MDGs with equity, and pro-poor growth	<ul style="list-style-type: none"> ▪ GOB Joint Cooperative Strategy fully implemented (Baseline 2010: No; Target 2015: Yes) 	<ul style="list-style-type: none"> ▪ Bangladesh Economic Review published by Finance Division ▪ Annual MDG review 	<ul style="list-style-type: none"> ▪ Five year planning regime is reinstated. The transition could create implementation issues (R) ▪ Continuation of the political will (A) ▪ Improvement in the change management capacity of civil service (A) 	GED (Planning Commission) ERD Civil Society	UNDP: RR- \$0.5M OR (unfunded) - \$6M UNFPA ¹⁶ : RR - \$0.2M OR - (funded) - \$4M
Output 1.5 Government, civil society and the private sector are better able to plan for and augment more geographically and sectorally balanced Foreign Direct Investment and trade.	<ul style="list-style-type: none"> ▪ No. of new Aid for Trade initiatives by Government of Bangladesh¹⁷ in target districts or underserved sectors (Baseline 2010: n/a; Target 2016: >5) 	<ul style="list-style-type: none"> ▪ Donor reports ▪ Bangladesh Accreditation Board (BAB)/ International Accreditation forum (IAF) 	<ul style="list-style-type: none"> ▪ FDI resources are stable/ growing (A) ▪ Political stability and other factors impacting on FDI (A) ▪ Competitiveness and policy biases towards key sectors (A) ▪ Accreditation/certification gains widely promoted in Bangladesh (A) 	GED MJT BSTI DoF	UNDP: RR - \$1.5M OR (unfunded) - \$6M UNIDO: RR - \$0.6M OR (funded) - \$4.4M
Output 1.6 Vulnerable groups engaged in farming, especially small producers in targeted Upazilas benefit from innovative services and community trainings to increase their agricultural income and food security.	<ul style="list-style-type: none"> ▪ Income of participating households (Baseline: TBD; Target 2014: 20% increase on baseline) 	Baseline and completion surveys (2011 and 2014)	<ul style="list-style-type: none"> ▪ Present interest on promoting food security and agricultural productivity continues (A) 	MoA MoLF MoEF	FAO: OR (funded) - \$1M OR (unfunded) - \$3.5M
Output 1.7 Vulnerable groups benefit from area-based interventions that support local economic development and improve livelihoods.	<ul style="list-style-type: none"> ▪ % of households with increased incomes in the targeted areas such as CHT and Chars lands (disaggregated by head of household) (Baseline 2010: n/a; Target 2015: an increase 	<ul style="list-style-type: none"> ▪ UN Surveys in 2011, 2013 and 2015 ▪ UN Surveys in 2011, 2013 and 2015 ▪ UN Annual Project 	<ul style="list-style-type: none"> ▪ Political support for decentralization increases (A) ▪ MSME take up (A) 	MoCHTA MoA, Local Governments LGED Mol PKSF MoFL	UNDP: OR (funded) - \$25M OR(unfunded) - \$60M UNIDO: RR - \$0.6M OR (funded) - \$6.4M

¹⁴ Refers to productive public and private assets including lands, forests, water resources, warehouses, and other agricultural assets.

¹⁵ With specific protection for female-headed households.

¹⁶ Refers to Population and Housing Census (2010 -2013) Resources

¹⁷ Refers to resource bids and other activities

	<p>of 50,000; Women-headed household Baseline 2010: n/a, Target 2015: >50% of the increase in numbers)</p> <ul style="list-style-type: none"> ▪ No. of MSMEs in targeted lagging regions assisted to access markets, and financial and technological services (Baseline 2010: To be established; Target 2015: 20% increase on base) 	reports		MoTJ	<p>UNESCO: RR - \$0.1M OR (unfunded) - \$0.4M</p>
--	---	---------	--	------	---

UNDAF Pillar Three: Social Services for Human Development

National Priority:	Securing Human Resource Development Improving Water and Sanitation				
Millennium Development Goal:	MDG 2: Achieve Universal Primary Education MDG 1: Eradicate Extreme Poverty and Hunger MDG 3: Promote Gender Equality and Empower Women MDG 8: Develop a Global Partnership MDG 4: Reduce Child Mortality MDG 5: Improve Maternal Health MDG 6: Combat HIV/AIDS, Malaria and other Diseases MDG7: Ensure Environmental Sustainability MDG7: Ensure Environmental Sustainability Millennium Declaration				
Outcomes	Indicators, Baselines, Target	Means of Verification	Risks and Assumptions	Partners	Indicative Resources
<p>OUTCOME 1 Deprived populations in selected areas, particularly women, children and youth benefit from increased and more equitable utilization of quality health and population, education, water, sanitation and HIV services.</p> <p>Lead- UNICEF</p>	<ul style="list-style-type: none"> ▪ Proportion of deliveries attended by skilled health providers disaggregated by wealth quintiles and residence (Baseline: 24%, Target: 50%) ▪ Contraceptive prevalence rate (modern method) disaggregated by wealth quintiles and residence (Baseline: 51%, Target: National average) ▪ % of boys and girls who enrolled in grade 1 reaching the last grade of primary education with reduced disparity between the high and low performing upazillas by 2015 ▪ % of population using an improved and safe water source and improved sanitation facility (Water: Baseline 2009: 86; Target 2015: 89; Sanitation: Baseline 2010: 53, Target 2015: 59) ▪ % of women aged 15-49 who gave birth in the 2 years preceding the survey receiving post natal care within 2 days of delivery. Baseline: 21% , CRM 	<ul style="list-style-type: none"> ▪ 1.Baseline : MICS 2009, Endline: MICS 2015 ▪ 2 Baseline SVRS 2009) Endline (SVRS 2015) ▪ 3.(MICS 2009, 2012, 2015-EMIS 2012, 2013, 2014, 2015, 2016) 	<ul style="list-style-type: none"> ▪ Social service sector remain as national priority with adequate national budget allocation ▪ New Sector Strategies for Education and Health approved 	<p>MoHFW DGHS DGFP BAEC</p>	<p>UNICEF: RR - \$16M OR - (funded) \$4M OR - (unfunded) - \$264M</p> <p>ILO: OR (funded) - \$1M</p> <p>UNAIDS: RR - \$3.5M</p> <p>UNDP: OR (funded) - \$3M</p> <p>UNESCO: RR - \$1.9M OR - (unfunded) - \$2.1M</p> <p>UNFPA: RR - \$25.5M OR (unfunded) -\$19M</p> <p>UNHCR: RR - \$5.5M</p>

	2010; Target: 27%				<p>WFP: OR (funded) - \$0.03275M</p> <p>WHO: RR - \$58.3M OR - (unfunded) - \$0.45M</p> <p>IOM: OR - (funded) - \$0.225M</p> <p>IAEA: OR (funded) - \$1.6M OR (unfunded) - \$0.3M</p>
<p>Output 1.1 Communities, including the most vulnerable groups, benefit from increased availability and accessibility of quality Health MDG-related services in selected areas.</p> <p>Lead – UNFPA</p>	<ul style="list-style-type: none"> % of certified SDPs providing 24/7 midwifery services by certified professionals, EMONC services, IMCI, and at least three modern planning methods at any given time. No. of beds in radiotherapy centres increased to strengthen capacity of radiotherapy and nuclear medicine services by clinical oncology departments. (Baseline 2010: 500, Target 2015: 650) 	<ul style="list-style-type: none"> Baseline and Endline: GOB HMIS, programme progress report, Annually Baseline: BDHS 2011 (BDHS 2007 was 37%) Endline:BDHS 2015 Baseline: facility survey Endline: facility survey 	<ul style="list-style-type: none"> GOB sustain necessary resources (financial, commodities, HR) Adequate human resource management in place within the MOHFW Two Directorates' (DGHS&DGFP) coordination and linkages are operational 	<p>MoHFW DGHS DGFP BAEC Local and International NGOs</p>	<p>UNICEF: RR - \$1.5M (20 Districts) OR - (unfunded) - \$45M (Urban: 5M)</p> <p>WHO: RR - \$29M (Cannot be more specific at this point in time)</p> <p>UNFPA: RR - \$19M OR (unfunded) - \$10M</p> <p>UNHCR: RR - \$2M</p> <p>IAEA: OR (funded) - \$1.6M OR (unfunded) - \$0.3M</p>
<p>Output 1.2 District and Sub-district authorities have capacity to plan, allocate and utilize resources for MDGs related health services delivery, especially for the poorest and most vulnerable.</p> <p>Lead- UNICEF</p>	<ul style="list-style-type: none"> Proportion of districts and upazilas that have utilized 75% of the funds allocated as per the MNCH, AH-FP plans developed according to the local level planning (LLP) guidelines (Baseline:<5%, Target: 50%) 	<ul style="list-style-type: none"> List of endorsed district and upazila plans mentioned in annual programme progress report (APPR) Annual financial performance reports (DGHS and DGFP) 	<ul style="list-style-type: none"> Decentralized allocation and funds flow mechanism agreed by MOHFW, DGHS and DGFP under the new sector programme (under the chapter on Decentralization and LLP) Admin and financial delegation under each of the two directorates 	<p>MoHFW DGHS DGFP HDCs</p>	<p>UNICEF: RR - \$1.5M (20 Districts) OR (funded) - \$3M (20 Districts) OR (unfunded) - \$12M (20 Districts)</p> <p>WHO: \$14M</p> <p>UNDP: OR (funded) - \$1.5M</p>

			(DGHS&DGFP) at district and below level clearly agreed upon and communicated to local authorities and line ministry officials.		UNFPA: RR - \$2.5M OR - (unfunded) - \$2.5M UNHCR: RR - \$0.5M
<p>Output 1.3 Health authorities have updated, developed and approved equity-focused policies, strategies and guidelines using evidence and/or best practices.</p> <p>Lead- WHO</p>	<ul style="list-style-type: none"> No. of evidence-based strategies and guidelines developed and approved (Baseline: n/a, Target:5) 	<ul style="list-style-type: none"> Copies of approved strategies and guidelines in place; List of approved strategies and guidelines mentioned in Annual Programme Review Report of MoHFW Annual Programme Review Reports of DGHS and DGFP 	<ul style="list-style-type: none"> Political commitment to new sector programme (BHPP) goals and objectives and to MDG 4&5 achievement 	MoHFW DGHS DGFP Local and International NGOs	UNICEF: RR - \$2M (National) OR (funded) - \$1M (20 Districts) OR (unfunded) - \$14M (20 Districts) UNFPA: RR - \$2.5M OR (unfunded) - \$2.5M WHO: RR - \$15M
<p>Output 1.4 Boys and girls, especially from marginalized and vulnerable communities and areas are enrolled in Pre-primary, Primary schools or equivalent life skills based basic education programmes.</p> <p>Lead- UNICEF</p>	<ul style="list-style-type: none"> % of girls and boys aged 7-14 from selected marginalized and vulnerable communities who are enrolled in formal or informal education (disaggregated by age group). (Baseline: 0, Target-50%) 	<ul style="list-style-type: none"> EMISannual UNICEF Survey 2012 	<ul style="list-style-type: none"> Government and donors at least maintain current level of investment in education sector 	MoE MoPME MoWCA DPE DSHE BNFE BSA MoCHTA CHTDB DYD MoYS MoSW MoEWOE	UNICEF: RR - \$3M (20 Districts) OR (unfunded) - \$ 80M (Urban: 40; 20 Districts: 40 M) UNESCO: RR - \$1.5M OR (unfunded) - \$1M ILO: OR (funded) - \$ 1M UNHCR: RR - \$1M
<p>Output 1.5 Marginalized children benefit from national education policies and strategies that have been approved and being implemented by government.</p> <p>Lead- UNESCO</p>	<ul style="list-style-type: none"> % of girls and boys from ethnic minorities receiving formal pre-primary and lower primary education in their mother languages as per national education policy (Baseline: 0; Target: 50%) 	<ul style="list-style-type: none"> EMIS data 		MoE MoPME MoWCA DPE DSHE BNFE BSA MoCHTA CHTDB DYD MoYS MoSW HDCs	UNICEF: RR - \$1M OR unfunded - \$10M (National level) UNESCO: RR - \$0.25M OR (unfunded) - \$0.75M

<p>Output 1.6 Deprived population in communities, schools and health facilities in hard-to-reach areas (haor, char, flood, cyclone, and drought prone areas, arsenic and salinity affected areas, CHT) have increased availability of community-based integrated WASH package.</p> <p>Lead- UNICEF</p>	<ul style="list-style-type: none"> % of hard-to reach population, schools and health facilities in programme areas with access to integrated package of WASH interventions (Water: Baseline hard-to-reach population: 78% (MICS 2009); Target 2016: 90%. Sanitation: Baseline hard-to-reach population: 51% (MICS 2009); Target 2016: 70%). 	<ul style="list-style-type: none"> MICS 2009; 2012; 2015 Project Monitoring Reports DHS, DGHS Reports DPE/DSHE Reports/ Sources 	<ul style="list-style-type: none"> Budget allocations to poorest segments of the vulnerable populations are made available as per national policies (block grants, etc.) Inter-sectoral linkages are operational Sector and local government institutions assume effective regulatory role 	<p>MoLGRD&C DPHE MoPME MoE</p>	<p>UNICEF: RR - \$3M (20 Districts) OR (Unfunded) - \$64M (Urban:18M; 20 Districts: 46M)</p> <p>WHO: RR - \$0.3M</p> <p>UNHCR: RR - \$ 1.5M</p>
<p>Output 1.7 Authorities in LGIs have the technical and managerial capacity to implement WASH package to ensure safety and sustainability of drinking water, especially for the poor</p> <p>Lead - UNICEF</p>	<ul style="list-style-type: none"> % of LGIs in project areas taking measures to ensure safety and sustainability of drinking water supply (Baseline 2011: to be established in 2011; Target 2015: 20% from baseline) 	<ul style="list-style-type: none"> Progress/Monitoring reports NILG Progress Reports Donor Assessment Reports 	<ul style="list-style-type: none"> LGI elections Regulation of groundwater use adopted and in effect. Bangladesh able to negotiate on appropriate sharing of trans-boundary water resources with neighbouring countries 	<p>MoLGRD&C DPHE MoPME MoE</p>	<p>UNICEF: RR: \$1M (20 Districts) OR (Unfunded): \$25M (Urban:5M; 20 Districts: 20M)</p> <p>WHO: OR (Unfunded) - \$0.45M</p>
<p>Output 1.8 Authorities in sector institutions at all levels apply sector policies/guidelines on decentralized planning and financial management, including PME systems, in order to ensure sustainable, efficient and effective WASH service delivery</p> <p>Lead- UNICEF</p>	<ul style="list-style-type: none"> % of LGI initiatives complying with guidelines on decentralized management of WASH service delivery, including use of planning, monitoring and evaluation (Baseline: N/A; Target: 80%) 	<ul style="list-style-type: none"> Sector evaluation documents 	<ul style="list-style-type: none"> Political commitment to full decentralization Regulatory role of GOB fully endorsed Good international and inter-ministerial coordination and collaboration in place 	<p>MoLGRD&C DPHE MoPME MoE</p>	<p>UNICEF: RR - \$1M OR (Unfunded) - \$4M</p>
<p>Output 1.9 Vulnerable people (MARPs, other</p>	<ul style="list-style-type: none"> % of MARPs, including Most at Risk Adolescents (MARA), young people 15-24, and international 	<ul style="list-style-type: none"> (BDHS 2007, 2011, 2014 BSS 2006-7) 	<ul style="list-style-type: none"> Political will for scale up of HIV services, implementation of 	<p>MoEWOE MoHFW NASP</p>	<p>UNAIDS: RR - \$ 3.5M</p>

<p>Vulnerable groups as identified for NSP III and also the PLHIVs) benefit from increased availability of and access to HIV prevention, treatment, care and support.</p> <p>Lead-UNAIDS</p>	<p>migrants, accessing prevention rehabilitation (OST) and harm reduction services. (MARA Baseline to be established by UNICEF supported mapping and size estimation of MARA in 2011. Target: 60%. Record of MARPs interventions/MIS. MARPs Baseline 7.2% (comprehensive prevention service); Target 60% (BSS 2006-7, Record of MARPs intervention, Universal Access and UNGASS Report)</p>	<ul style="list-style-type: none"> ▪ Record of MARPs intervention. Universal Access Report UNGASS BSS ▪ Annual NSP review reports ▪ NASP MoHSW record 	<p>the 3rd national Strategic plan and for a coordinated national HIV and AIDS response increase</p> <ul style="list-style-type: none"> ▪ Continued implementation of interventions for MARPs prioritized by government and uninterrupted supply of HIV prevention commodities (Condom, Needle /Syringe, OST etc) ensured. 	<p>MoPME Bureau of Non-Formal Education MoCWA MoHA DNC MoLE Mol MoLJ&PA MoRA MoYS</p>	<p>UNICEF: RR - \$2M (National) OR (unfunded) - \$10M (Urban:5M; 20 Districts: 5M)</p> <p>UNFPA: RR - \$1.5M OR (unfunded) - \$0.5M</p> <p>IOM: OR (funded) - \$0.225M</p> <p>UNODC: RR - \$4.5M</p> <p>UNESCO: RR - \$0.15M OR (unfunded) - \$0.35M</p> <p>WFP: OR (funded) - \$0.0327M</p> <p>UNHCR: RR - \$0.5M</p>
<p>OUTCOME 2 Children, women and youth demand and benefit from effective social protection policies and improved services aimed at eliminating abuse, neglect, exploitation, and trafficking.</p> <p>Lead –UNICEF</p>	<ul style="list-style-type: none"> ▪ % of 6-14 year out of school children who are involved in child labor activities (2009 Baseline 2.3%, Target: 50% reduction of baseline -- however GoB policy target is 100% eradication by 2015) ▪ % of cases of all forms of trafficking prosecuted (Baseline: 47% - in august 2010, under trial cases 636, under investigation 35, pending 671, Target: 80% of cases prosecuted by 2016) 	<ul style="list-style-type: none"> ▪ MICS 2009 MICS 2012/2015 ▪ Police Monitoring Report 	<ul style="list-style-type: none"> ▪ Social protection and safety net scheme remain a priority for GOB 	<p>MoWCA MoHA MoSW MoLE MoLJPA MoEWOE Civil Society</p>	<p>UNHCR: RR - \$2.5M</p> <p>UNICEF: RR - \$10M OR (unfunded) - \$30M</p> <p>ILO: OR (funded) - \$3.8M OR (unfunded) - \$8M</p> <p>IOM: OR (funded) - \$1.6M OR (unfunded) - \$1M</p>
<p>Output 2.1 Deprived and vulnerable families have improved access to social protection services to reduce their vulnerability to abuse, violence and</p>	<ul style="list-style-type: none"> ▪ % of children/adolescents/women who received social services through case management (Baseline: N/A - Mapping exercise to be completed by 2011, Target: 30% increase) 	<ul style="list-style-type: none"> ▪ Baseline: proxy. / Child Protection IMS to be developed by 2011 	<ul style="list-style-type: none"> ▪ Government allocate and sustain necessary human and financial resources 	<p>MoWCA MoSW MoLE MoLJ&PA Aparajero Save the Children Alliance Plan international Rupantar CODEC</p>	<p>UNICEF: RR - \$7M OR (unfunded) - \$17M (urban: 8 and 20 Districts: 16 M)</p> <p>IOM: OR (funded) - \$0.5M OR (unfunded) - \$0.5M</p>

exploitation especially children, youth and women Lead- UNICEF				DSK, ASF	ILO: OR (funded) - \$2.5M OR (unfunded) - \$5M UNHCR: RR - \$1M
Output 2.2 All social protection policies and legal frameworks harmonized with international human rights conventions and protocols Lead- ILO	<ul style="list-style-type: none"> No. of key social protection laws and policies and strategies/operational plan¹⁸ reviewed and harmonized with international standards (Baseline: 12) 	<ul style="list-style-type: none"> Copies of draft laws, policies, strategies/operational plan 	<ul style="list-style-type: none"> Political commitment, programmatic support to harmonized local policies and legal framework 	MoHA MoWCA MoEWOE MoSW MoLJ&PA Aparajero Save the Children Alliance BNWLA LETI	UNICEF: RR - \$1M (National) OR (unfunded) - \$2M (National) IOM: OR (funded) - \$ 0.5M OR (unfunded) - \$ 0.5M ILO: OR (funded) - \$0.5M OR (unfunded) - \$1M UNHCR: RR - \$0.5M
Outputs 2.3 Communities practice positive social norms favorable to the prevention of violence, abuse and exploitation Lead- UNICEF	<ul style="list-style-type: none"> Existence of surveillance system for identification, reporting, referral, investigation, treatment and follow-up of instances of child maltreatment (baseline: to be established MICS 2012 and Police Database is in the process of being established) 	<ul style="list-style-type: none"> MICs 2012 - 2015 BDHS, 2007,2011,2014 Police Database 	<ul style="list-style-type: none"> Conducive environment in communities to accept change in social norm practices Commitment of local administration, law enforcing agencies and leaders 	MoWCA MoEWOE MoYS CMES BRAC Bangladesh Scout and Girl guide associations Rupantar DSK	UNICEF: RR - \$2M OR (unfunded) - \$11M (URBAN: 4 M and 20 District:9M) IOM: OR (funded) - \$0.6M ILO: OR (funded) - \$0.8M OR: (unfunded) - \$2M UNHCR: RR - \$1M
OUTCOME 3 Deprived community members in selected areas practice key life-saving, care and protective behaviours and raise their demand for quality social	<ul style="list-style-type: none"> % of households with water and soap at specific place for hand washing (Baseline: Will be available from CRM 2010; Target: 60% increase from baseline) Adolescent birth rate per 1,000 women (Baseline: 60% Target: 45%) Adolescent birth rate per 1,000 	<ul style="list-style-type: none"> Annual Child Risk Measure Survey (CRM) Monitoring Reports, MICs, 2011, 2014, Survey 2015 BDHS, ,2011,2014 	<ul style="list-style-type: none"> Sustained behavior change and availability of services. Decentralization process expanded and reinforced. 	Moi MoHFW DGHS DGFP MoWCA MoSW MoPME MoE MoLGRD&C	UNFPA: OR (unfunded) - \$1M UNHCR: RR - \$1M UNICEF: RR - \$4M OR (unfunded) - \$10M

¹⁸ Proxy indicators to indicate implementation of policy and legal framework (Number of children in detention & Children in pre-sentence detention)

<p>services</p> <p>Lead- UNICEF</p>	<p>women (Baseline: 60% Target: 45%)</p>		<ul style="list-style-type: none"> ▪ Mass media, cell phone and other communication channels reach expanded. ▪ NGOs/CBOs network continue to operate at local level. 	<p>DPHE</p>	
<p>Output 3.1 Deprived communities in selected areas have increased knowledge on key life-saving, care and protective behaviors.</p> <p>Lead – UNICEF</p>	<ul style="list-style-type: none"> ▪ % of adolescents who have comprehensive knowledge on marriage and fertility (legal age of marriage, minimum age of first pregnancy, risk of early pregnancy and knowledge on FP methods to delay pregnancy) (Baseline; will be available from CP baseline data. Target: 80% increase over baseline) 	<ul style="list-style-type: none"> ▪ Annual CRM survey ▪ BDHS, 2011, 2014 	<ul style="list-style-type: none"> ▪ Services (facilities) will be available fulfilling the communities demand. ▪ Demand creation for quality services can be undermined if quality services not available. 		<p>UNICEF: RR - \$4M (funded 20 districts) OR (unfunded) - \$10 M (Urban: 3 M; 20 Districts: 7M) Links with Pillar 1: Output 2.2)</p> <p>UNFPA: OR (unfunded) - \$1M</p> <p>UNHCR: RR - \$1M</p>

UNDAF Pillar Four: Food Security and Nutrition

National Priority:	Boosting Production, Income and Reducing Poverty Promoting Environmental Sustainability Securing Human Resource Development				
Millennium Development Goal:	MDG 1: Eradicate Extreme Poverty and Hunger MDG 3: Promote Gender Equality and Empower Women MDG 4: Reduce Child Mortality MDG 5: Improve Maternal Health MDG 7: Ensure Environmental Sustainability				
Outcome	Indicators, Baseline, Target	Means of Verification	Risks and Assumptions	Partners	Indicative Resources
OUTCOME 1 The urban and rural poor have adequate food security and nutrition throughout the life cycle.	<ul style="list-style-type: none"> ▪ % of population able to meet minimum daily energy requirements of 2122kcal (Baseline: 60%, Target 2016: 73 %) ▪ % of underweight children under five years of age, sex (Baseline: 37.4 %, Target 2016: 33%) ▪ % of populations with poor or borderline diet diversity score by age group, sex of household head and socio-economic status ,¹⁹ (Baseline: 25%, Target 2016: 20 %) ▪ Anaemia prevalence of pregnant women²⁰ (Baseline 46%, Target 2016: 25%) 	<ul style="list-style-type: none"> ▪ BBS Household Income and Expenditure Surveys (HIES 2005 and 2015²¹), ▪ BDHS 2007 ,2014 ▪ Cluster surveys in intervention area 	<ul style="list-style-type: none"> ▪ Progress continues in the education and other social as well as economic sectors 	MoFDM MoHFW MoA BAEC IPHN NGOs MoFL Private sector MoFL Mohr	WFP: RR - \$150.5M FAO: OR (funded) - \$26.8M OR (unfunded) - \$45.2M UNICEF: RR - \$5M OR (funded) - \$2M OR (unfunded) - \$83M WHO: RR - \$2.2M OR (unfunded) - \$3.3M UNHCR: RR - \$3.5M IOM: OR (unfunded) -\$1M IAEA: OR (funded) - \$1M OR (unfunded) - \$0.4M

¹⁹ By expenditure quintile

²⁰ Proxy indicator for micronutrient deficiencies in the population

²¹ Target needs to be adjusted when HIES 2010 data are available (2011)

<p>Output 1.1 Poor communities benefit from strengthened institutional mechanisms for coordinating and monitoring the implementation of food security, safety and nutrition policies and programs, effective at national and in targeted sub-national levels.</p>	<ul style="list-style-type: none"> National policies, guidelines and tools on food security, food safety and nutrition are updated, disseminated and implemented in expected time frame 	<ul style="list-style-type: none"> Annual NFPPOA report 1st National food safety - Monitoring report 2013 Updated National Food composition tables 2015 REACH progress report 	<ul style="list-style-type: none"> GoB allocates sufficient resources and uses the allocated resources effectively 	<p>MoFDM MoHFW MoA</p>	<p>WFP: RR - \$0.5M</p> <p>WHO: RR - \$0.4M OR (unfunded) - \$0.6M</p> <p>UNICEF: RR - \$1M OR (unfunded) - \$9M</p> <p>UNHCR: RR - \$1M</p> <p>FAO: OR (funded) - \$15.5M OR (unfunded) - \$9.7M</p>
<p>Output 1.2 Communities, including the most vulnerable, benefit from services for the prevention and treatment of maternal and child malnutrition at Upazila and union levels</p>	<ul style="list-style-type: none"> 20% of targeted upazilas provide facility and community based quality nutrition services (Baseline:0) Recovery rates of severely and moderately malnourished children and pregnant & lactating women in respective treatment programs (Target 2016: 75%²²) Proportion of target children and women taking micro nutrient supplements as recommended (0 to 80% MNP, 95% Vit A, 15²³ % to 50% iron folate) 	<ul style="list-style-type: none"> National MIS/DGHS Programme M&E data Cluster survey (2015) 	<ul style="list-style-type: none"> Nutrition services are effectively mainstreamed into PHC services under the next HPNSSP The targeted population has access to health, water and sanitation services and facilities 	<p>MoHFW IPHN NGOs</p>	<p>WFP: RR - \$45M</p> <p>WHO: RR- \$0.8M OR (unfunded) - \$1.2M</p> <p>UNICEF: RR - \$4M OR (unfunded) - \$46M</p> <p>UNHCR: RR - \$2M</p>
<p>Output 1.3 Poor communities benefit from improved access to agricultural inputs, food technologies and fortified foods.</p>	<ul style="list-style-type: none"> Ratio of non-foodgrain crop (MT)** to food grain production (MT) – (Plan of Action of the National Food Policy Monitoring report) Composite indicator: Increase in major crops yields (MT/Ha) as a % – (CIP result framework); (Baseline 2010 rice:6 ton/hectare; Target 2015:6.5-7 	<ul style="list-style-type: none"> Agricultural census 2008 Food balance sheets 	<ul style="list-style-type: none"> Stability in food prices and agricultural inputs Private sector collaboration Oil Fortification will be mandatory and compliance by oil refineries 	<p>MoA MoFDM MoFL BAEC Private sector</p>	<p>WHO: RR - \$0.2M OR (unfunded) - \$0.3M</p> <p>FAO: OR (funded) - \$11.1M OR (unfunded) - \$35.5M</p> <p>UNICEF: OR (funded) - \$2M OR (unfunded) - \$6M</p>

²² Services are not yet in place so baseline data yet need to be collected

²³ HKI/IPHN 2006

	ton/hectare); (Baseline 2010 ground nuts: 2-3 ton/hectare; Target 2015: 2.5-3.5)				<p>WFP: <i>Resources for this output are reflected in other outputs of Pillar 4.</i></p> <p>IAEA: OR (funded) - \$1M OR (unfunded) - \$0.4M</p>
<p>Output 1.4 Disaster- stricken, food insecure household's benefit from adequate and diversified food and agricultural rehabilitation support provided in a timely manner.</p>	<ul style="list-style-type: none"> % of disaster affected vulnerable households, including displaced households, receiving an adequate & appropriate food, nutrition and agriculture inputs assistance as part of emergency response (Baseline: 50%, Target: 2016: 100%) 	<ul style="list-style-type: none"> Emergency needs assessment Emergency intervention report 	<ul style="list-style-type: none"> Nutrition cluster activated & well coordinated with food WASH and other clusters GOB request UN response and Dips commit financial resources for the response. 	<p>MoFDM Moa MoFL Mohr NGOs</p>	<p>WFP: RR - \$100M</p> <p>WHO: RR - \$0.4M OR (unfunded) - \$0.6M</p> <p>UNICEF: OR (unfunded) - \$18M</p> <p>IOM: OR (unfunded) - \$1M</p>
<p>Output 1.5 The rural and urban poor have improved knowledge and practices on nutrition, e.g. gender, hygiene, IYCF and food safety</p>	<ul style="list-style-type: none"> Proportion of targeted households following appropriate basic nutrition, hygiene and sanitation practices* by beneficiary category (Target 2016: 80%²⁴) (*foot note – this will be defined in a set of questions) % of children aged 6-23 months receiving complementary food with at least the minimum dietary diversity (Baseline: 33.5%, Target 2016: 50%) 	<ul style="list-style-type: none"> Program monitoring BDHS 2007 and 2014 2009 HFSNA Survey 	<ul style="list-style-type: none"> Households have sufficient income to access adequate , diversified and appropriate foods for the whole family Food prices remain stable A sufficient and adequate variety of food items available on local markets 	<p>MoFDM Moa NGOs</p>	<p>WFP: RR - \$5M</p> <p>WHO: RR - \$0.4M OR (unfunded) - \$0.6M</p> <p>FAO: OR (funded) - \$0.2M</p> <p>UNICEF: OR (unfunded) - \$4M</p> <p>UNHCR: RR - \$0.5M</p>

²⁴ Baseline not available yet

UNDAF Pillar Five: Climate Change, Environment, Disaster Risk Reduction and Response

National Priority:	Promoting Environmental Sustainability Building better Energy and Other Infrastructures				
Millennium Development Goal:	MDG 1: Eradicate Extreme Poverty and Hunger MDG 3: Promote Gender Equality and Empower Women MDG 4: Reduce Child Mortality MDG 7: Ensure Environmental Sustainability				
Outcome	Indicators, Baseline, Target	Means of Verification	Risks and Assumptions	Partners	Indicative Resources
<p>OUTCOME 1 By 2016, populations vulnerable to climate change and natural disaster have become more resilient to adapt with the risk.</p>	<ul style="list-style-type: none"> ▪ Environment, climate and disaster vulnerability index (Baseline 2012: TBD; Target 2016: 20 % vulnerability reduced in coastal districts) ▪ Community Asset Score for disaster risk and reduction. (Baseline 2010: 90; Target 2016:300) 	<ul style="list-style-type: none"> ▪ DMB ▪ DRR ▪ BBS ▪ WFP ▪ UNICEF 	<ul style="list-style-type: none"> ▪ Inadequate Fund ▪ Government Ownership ▪ Lengthy approval process ▪ Gap in real time response 	<p>MoFDM MoEF</p> <p>Bi/Multi-lateral Donors</p>	<p>UNDP: RR - \$6.5M OR (funded): \$30M OR (unfunded): - \$75M</p> <p>UNFPA: RR - \$1.5M</p> <p>UNICEF: RR - \$5M OR (funded) - \$0.5M OR (unfunded) - \$3.3M</p> <p>WFP: RR - \$150M</p> <p>FAO: OR (funded) - \$1M OR(unfunded) - \$10M</p> <p>UNEP: RR - \$0.1M OR (unfunded) - \$0.1M</p> <p>UNESCO: OR (unfunded) - \$0.3M</p>

					UNHCR: RR - \$1M IOM: OR (unfunded) - \$3.5M
Output 1.1 Climate change adaptation and disaster risk reduction integrated into sectoral policies and plans	<ul style="list-style-type: none"> Amount of resources budgeted by the Government for disaster risk reduction and climate change adaptation against sectoral policies and plans (Baseline 2010: USD 100M; Target 2016:USD 500M) 	<ul style="list-style-type: none"> Desk review of sectoral plans Annual UN project reports DMB DRR 	<ul style="list-style-type: none"> Issue of DRR and CC remain priorities in the GoB medium term budget framework and annual budget allocation 	MoHFW MoWCA MoE MoI MoA MoLGRDC MoEF, MoFDM MoSW MoP MoEF MoL PC	UNDP: RR - \$1.5M OR (funded) - \$15M OR (unfunded) - \$12M UNICEF: OR (unfunded) - \$3.3M UNESCO: OR (unfunded) - \$0.3M IOM: OR (unfunded) - \$0.5M
Output 1.2 Community and Local Institutions have greater capacity on Disaster Risk Reduction and climate change adaptation	<ul style="list-style-type: none"> No. of Unions in disaster prone areas with developed community based risk reduction & CC adaptation action plans (Baseline 2009: 500, Target 2016: 1500) No. of rural communities with disaster/climate resilient habitats and community assets (Baseline 2010: 90, Target 2016: 300) 	<ul style="list-style-type: none"> Annual UN project reports Programme Outcome Survey Report MoUs between towns and UN UN Annual Project Reports 	<ul style="list-style-type: none"> Issue of political commitment Cooperation of local government 	MoFDM MoLGR&RDC BWDB MoEF DMB & DRR	UNDP: RR - \$2M OR (funded) - \$15M OR (unfunded) - \$48M WFP: RR - \$125M (25M per year) FAO: OR (funded) - \$1M OR (unfunded) - \$7M
Output 1.3 Communities, local and national governments have greater capacity to respond and to provide basic services in emergencies ²⁵ and early recovery ²⁶	<ul style="list-style-type: none"> No. of disaster rescue and evacuation volunteers (baseline 2011: 32000 , Target 2016: 62000) No of district DMCs with a resourced disaster response plan (2010:17 District DMCs, Target 2016: 40 District DMCs) 	<ul style="list-style-type: none"> UN Disaster Emergency Group& IASC Cluster leads UN Disaster Emergency Group& IASC Cluster leads UN Disaster Emergency Group &IASC Cluster Leads UNICEF reports 	<ul style="list-style-type: none"> Effective inter-sectoral/intra-Cluster coordination, collaboration and preparedness planning 	MoHFW MoWCA MoE MoLGRDC MoFDM MoSW	UNDP: RR - \$2M OR (unfunded) - \$10M UNICEF: RR - \$5M (\$3M to 20 districts and \$2M to urban) OR (funded) - \$0.5M WFP: RR - \$25M UNFPA: RR - \$1.5M IOM: OR (unfunded) - \$1M

²⁵Including basic services such as health, education, water & sanitation, nutrition and food

²⁶Such as livelihoods

					UNHCR: RR - \$ 0.5M
Output 1.4 Communities, local and national authorities have better access to knowledge on climate change impact for better decision making	<ul style="list-style-type: none"> % of targeted communities, local and national authorities who are aware of the impact of climate change on their respective communities and/or sectors (Baseline 2010: 22; Target 2016: 50) 	<ul style="list-style-type: none"> Proceedings of consultations Knowledge product documents Change Outlook Report published Solution Exchange Report 	<ul style="list-style-type: none"> Level of commitment for gaining knowledge Effective institutional arrangement 	<p>Local government bodies</p> <p>Disaster and Environment management committees at Union, Upazila & District level</p> <p>Academic, Research & training institutions</p>	<p>UNDP: RR- \$1M OR (unfunded) - \$5M</p> <p>IOM: OR (unfunded) - \$2M</p> <p>UNHCR: RR - \$ 0.5M</p> <p>FAO: OR (unfunded) - \$3M</p> <p>UNEP: RR - \$0.1M OR (unfunded) - \$0.1M</p>
OUTCOME 2: By 2016, vulnerable populations benefit from natural resource management (NRM); environmental governance and low- emission green development.	<ul style="list-style-type: none"> No. of Government policies, strategies or plans approved in support of sustainable management of natural resources (Baseline 2010:22²⁷, Target 2016: 4) Energy generated from renewable sources (Baseline 2010: 42MW; Target 2016: 85MW) % reduction in ozone-depleting substances/greenhouse gases 	<ul style="list-style-type: none"> National Report to CBD Secretariat TPP & DPP Desk review of government policies, strategies and plans National budget UNIDO Reports 	<ul style="list-style-type: none"> Inadequate Fund Government Ownership Lengthy approval process Inadequate access to cleaner technology 	<p>MoEF</p> <p>DoE</p> <p>MOEPMR</p> <p>SEDA</p> <p>Planning Ministry</p> <p>PC</p>	<p>UNDP: RR - \$4M OR (funded) - \$18M OR (unfunded) - \$10M</p> <p>UNEP: RR - \$0.63M OR (unfunded) - \$0.06M</p> <p>FAO: RR - \$5M OR (funded) \$5M OR (unfunded) - \$5M</p> <p>UNESCO: OR (unfunded) - \$0.2M</p> <p>UNHCR: RR - \$4M OR (funded) - \$1M</p> <p>UNIDO: RR -\$0.5M</p> <p>ILO: OR (unfunded) - \$1M</p>
Output 2.1 Communities and local	<ul style="list-style-type: none"> No. of communities implementing a sustainable 	<ul style="list-style-type: none"> UN project reports 	<ul style="list-style-type: none"> Inadequate Fund Lengthy approval 	<p>MoEF</p> <p>DoE</p>	<p>UNDP: RR - \$2M</p>

²⁷Already in draft in 2010: a) National Land Zoning Law, b) Village Improvement Act

and national authorities are better able to conserve biodiversity and manage natural resources in a pro-poor and sustainable manner	<ul style="list-style-type: none"> natural resource management plan (Baseline 2010: 8, Target 2016: 20) Area covered under effective pollution abatement practices (Baseline 2010: 0 ha, Target 2016: 1000 ha) 	<ul style="list-style-type: none"> State of the Environment reports of DoE CWBMP Annual project reports Asia-Pacific Forum for Environment and Development Grant reports REDD+ reports 	<ul style="list-style-type: none"> process Poor's limited access to natural resources 	<ul style="list-style-type: none"> Forest Department Planning Ministry PC 	<ul style="list-style-type: none"> OR (funded) - \$7M OR (unfunded) - \$2M UNEP: RR - \$0.43M OR (unfunded) - \$0.03M UNHCR: RR - \$2M OR (funded) - \$1M FAO RR - \$5M OR(Unfunded) - \$5M
Output 2.2 Relevant institutions have greater capacity to implement existing environment policies, plans and budgets ²⁸ for better environmental governance integrating considerations of poverty-environment-climate change interfaces	<ul style="list-style-type: none"> No. of Government investment projects incorporating Poverty Environment and Climate Change Indicators in the project design and implementation (Baseline 2010:5, target 2016:30) No. of Upazila administrations that have a proper monitoring and regulatory mechanism (Baseline 2010: TBD, Target 2016: TBD). 	<ul style="list-style-type: none"> GED, Planning Commission DoE /Upazila Reports UN project reports UN project reports 	<ul style="list-style-type: none"> Inadequate Fund Government Ownership Lengthy approval Process gap in real time response Inadequate access to cleaner technology 	<ul style="list-style-type: none"> MoEF DoE Forest Dept. Finance Ministry Planning Ministry PC 	<ul style="list-style-type: none"> UNDP/UNEP PEI: RR - \$2M OR (funded)- \$3M UNESCO: OR (unfunded): \$0.2M
Output 2.3 Pro-poor Plans, strategies and partnership mechanism are in place to implement low emission green growth with better access to climate financing mechanisms	<ul style="list-style-type: none"> No. of plans, strategies and policies drafted in favour of low emission green growth (Baseline 2010:TBD, Target 2016: TBD) 	<ul style="list-style-type: none"> Study report / UN annual Report Budget of Implementation Support Programme project reports UNEP Green Economy Report Montreal Protocol reporting 	<ul style="list-style-type: none"> Inadequate Fund Lengthy approval Process gap in real time response Inadequate access to cleaner technology 	<ul style="list-style-type: none"> Finance Ministry Sectoral Ministries Private sector 	<ul style="list-style-type: none"> UNDP: OR (funded) - \$5.5M OR (unfunded) - \$2.5M ILO: OR (unfunded) - \$1M FAO: OR (unfunded): - \$5M UNEP: RR: - \$0.2M OR (unfunded) - \$0.03M
Output 2.4 On-grid and pro-poor off-grid ²⁹ clean energy technologies promoted	<ul style="list-style-type: none"> % of rural households in targeted communities with access to renewable energy sources and technologies (Baseline 2010: TBD, Target 2016: 15% on baseline) Amount in national budget 	<ul style="list-style-type: none"> UN annual project reports UN annual project reports 	<ul style="list-style-type: none"> Inadequate Fund Government Ownership Lengthy approval process Level of Public-Private Partnership 	<ul style="list-style-type: none"> MoPEMR SEDA Finance Ministry Private sector 	<ul style="list-style-type: none"> UNDP: OR (funded) - \$5.5M OR (unfunded) - \$2.5M UNHCR: RR - \$2M UNIDO:

²⁸Including surveillance, assessment and management plan

²⁹Solar, wind, biomass/gas

	<p>allocated to energy efficient construction and appliances³⁰</p> <p>(Target 2016: 20% energy budget increased over baseline in 2011)</p>	<ul style="list-style-type: none"> ▪ Finance Ministry, GoB, ▪ Desk review based on national budget 			RR - \$0.5M
--	---	--	--	--	-------------

³⁰As proxy for the quality and quantity of UN's advocacy and support to energy efficient construction and appliances

UNDAF Pillar Six: Pro-Poor Urban Development

National Priority:	Securing Human Resource Development Promoting Environmental Sustainability				
Millennium Development Goal:	MDG 1: Reduce Extreme Poverty and Hunger MDG 3: Promote Gender Equality and Empower Women MDG 7: Ensure Environmental Sustainability Millennium Declaration				
Outcome	Indicators, Baseline, Target	Means of Verification	Risks and Assumptions	Partners	Indicative Resources
OUTCOME 1: By 2016, at least three million urban poor have improved living conditions and livelihoods to realize their basic rights	<ul style="list-style-type: none"> Urban extreme³¹ poverty rate in 28 urban areas as measured by Direct Calorie Intake (Baseline 2005: 14.60%, Target 2015: 9.5%) % of households in low income urban areas who report that their living conditions have improved in the past 5 years (Baseline: n/a, target: 2016: 70%) 	<ul style="list-style-type: none"> HIES 2005/10/15 HIES 2005/10/15 Annual desk review by UN Annual desk review by UN 	<ul style="list-style-type: none"> National economic growth does not decline significantly (A) Political instability does not disrupt improving livelihoods (A) 	MoLGRD&C MoH&PW	UNDP: RR - \$10M OR (funded) - \$61M OR (unfunded) - \$29M UNFPA: RR - \$1.5M OR (unfunded) - \$1.5M UNICEF: (Resources shown under Pillar 3) WFP: RR - \$9.5M ILO: RR - \$5M OR (unfunded) - \$1M IOM: RR - \$0.1M
Output 1.1 Key stakeholders ³² are better able to	<ul style="list-style-type: none"> % of households in low income urban areas that report their tenure security has improved³³ (Baseline 2009: 50%, Target 2016: 75%) 	<ul style="list-style-type: none"> Project Household 	<ul style="list-style-type: none"> GoB's economic policies 	MoL MoH&PW MoSW	UNDP: RR - \$ 2M OR (funded) -

³¹ less than 2122 k cal

provide the urban poor with secure tenure and affordable housing		Surveys 2009/10, 2012, 2014 ▪ Project Census	become progressively pro-poor (A) ▪ GoB not to adapt Social Protection Policy (R)		\$10M OR (unfunded) \$5M
Output 1.2 Urban poor have improved access to financial services and decent employment	<ul style="list-style-type: none"> ▪ % of poor who have regular employment (Baseline 2009: 30%, Target 2015: 60% increase) ▪ % of households with access to savings services employment (Baseline 2009: 40%, Target 2010: 70% increase) 	<ul style="list-style-type: none"> ▪ UN annual projects report ▪ 	<ul style="list-style-type: none"> ▪ Wage employment opportunities are available in town s(A) ▪ Extremely poor can access formal financial markets (A) 	Private sector MFIs	UNDP: OR (funded) \$16M OR (unfunded) \$10M ILO: RR -\$5M IOM: RR -\$0.1M
Output 1.3 Urban poor have better access to improved basic services ³⁴ and social assistance programs	<ul style="list-style-type: none"> ▪ Population with access to improved drinking water and sanitation services in the selected urban areas (Baseline 2009: 0, Target 2015: 7, 60,000) 	<ul style="list-style-type: none"> ▪ UN annual projects report 	<ul style="list-style-type: none"> ▪ Large-scale forceful evictions are not undertaken (A) 	MoLGRD&C (LGED, DPHE) MoPME/DPE/BNFE	UNDP: OR (funded) \$30M OR (unfunded) -\$7M UNICEF: (Resources under pillar 3) UNFPA: RR - \$1.5M OR (unfunded): \$1.5M WFP: RR - \$9.5M
Output 1.4 Municipalities ³⁵ and urban poor have a greater capacity for participatory and pro-poor urban governance	<ul style="list-style-type: none"> ▪ No. of active³⁶ Community Development Committees/Slum Development Committees (Baseline 2009: 590,; Target 2015: 3,000) 	<ul style="list-style-type: none"> ▪ UN annual projects report ▪ Desk review by UN 	<ul style="list-style-type: none"> ▪ City and Pourashava governments constrained by national policies (R) 	MoLGRD&C	UNDP: RR - \$8M OR (funded) - \$5 M OR (unfunded) - \$7M UNICEF: Resources

³² Ministry of Housing, municipal authorities, key line ministries

³³ through purchase of land and/or house, enforceable rental agreement, government policies

³⁴ water, sanitation low cost housing, solid waste management, education, health and nutrition etc

³⁵ including government line agencies and non-government institutions

³⁶ action includes meetings, engaged in community contracting, demand mediation etc.

					shown under Pillar 3 ILO: OR (unfunded) - \$1M
--	--	--	--	--	---

UNDAF Pillar Seven: Gender Equality and Women's Advancement

National Priority:	Realizing Gender Equality				
Millennium Development Goal:	MDG 2: Achieve Universal Primary Education MDG 3: Promote Gender Equality and Empower Women Millennium Declaration				
Outcome	Indicators, Baseline, Target	Means of Verification	Risks and Assumptions	Partners	Indicative Resources
OUTCOME 1 Marginalized and disadvantaged women in selected districts and urban slums increase their participation in wage employment and other income-generating activities	<ul style="list-style-type: none"> Proportion of marginalized and disadvantaged women in the total female labor force participation in the selected districts and urban slums. <i>Baseline: TBD [29.2% , national, BBS 2008]</i> <i>Target: 35% [in selected area, 2016]</i> 	<ul style="list-style-type: none"> Labor force survey, BBS / ILO Baseline and Endline Surveys 	<ul style="list-style-type: none"> Job market situation remain favorable Political instability Natural disaster 	MoWCA DWA MoLE	UNDP: RR - \$0.5M OR (unfunded) - \$6.5M UNFPA: RR - \$1M UNICEF: RR - \$0.5M OR (unfunded) - \$5M UNESCO: RR - \$0.25 OR (unfunded) - \$0.75 UNHCR: RR - \$1M UN WOMEN: OR (unfunded) - \$0.5M IOM: OR (funded) - \$0.2M OR (unfunded) - \$0.6M
Output 1.1 Marginalized and disadvantaged women in selected districts and urban slums have increased skills	<ul style="list-style-type: none"> % of women & girls received vocational and entrepreneurial skills training in the selected areas who secured 	<ul style="list-style-type: none"> BMET Baseline survey, training reports & records 		BMET MoLE Private Sectors	UNDP: OR (unfunded) - \$2.5M IOM: OR (funded) - \$0.2M

and knowledge leading to improved employability and entrepreneurship	employment within six months of completion of the training <i>Baseline: TBD</i> <i>Target: 10% increase from baseline status, 2016]</i>				OR (unfunded) - \$0.3M UN WOMEN: OR (unfunded) - \$0.5M
Output 1.2 Girls in selected districts benefit from an enabling environment that facilitates their access to secondary and tertiary education	<ul style="list-style-type: none"> % of secondary and tertiary institutions in the selected areas which meet the gender-friendly environment criteria (including physical facilities separate washroom, crèche etc) <i>Baseline: TBD</i> <i>Target: At-least 40% have gender-friendly environment, 2016]</i> 	<ul style="list-style-type: none"> National Education Survey, University Education Survey, BANBEIS Baseline and Endline surveys 	Government's political commitment would be there	MoE MoPME BANBEIS DSHE	UNICEF: RR - \$0.5M OR (unfunded) - \$5M (\$2M for districts and \$3M to urban) UNESCO: RR - \$0.25M OR (unfunded) - \$0.75M UNHCR: RR - \$1M
Output 1.3 Policy makers and implementers both in the public and private sectors apply increased knowledge to better support gender sensitive work environments.	<ul style="list-style-type: none"> % of women working in the selected organizations who perceive that they are working in safe and gender sensitive environment <i>Baseline: TBD</i> <i>Target: At-least 20% women feel so, 2016]</i> 	<ul style="list-style-type: none"> Baseline and Endline surveys 		MoWCA DWA BGMEA MoLE	UNFPA: RR - \$1M UNDP RR - \$0.5M IOM: OR (unfunded) - \$0.2M
Output 1.4 Marginalized and disadvantaged women in the poorest districts and urban slums have increased access to accurate, relevant information and credit.	<ul style="list-style-type: none"> % of women applied for institutional credit who received it without collateral in the selected areas <i>Baseline: TBD</i> <i>Target: 20% increase from baseline, 2016]</i> 	<ul style="list-style-type: none"> Baseline and endline surveys 		NGOs Credit institutions Bank	UNDP: OR (unfunded) - \$4M IOM: OR (unfunded) - \$0.1M
OUTCOME 2 Social and institutional vulnerabilities of women including the marginalized and disadvantaged are reduced	<ul style="list-style-type: none"> Median age at marriage for girls of the last two wealth quintiles in the selected areas <i>Baseline: TBD [national level data - 15.8 yrs in urban area, 14.8 yrs in rural area, BDHS 2007]</i> <i>Target: 18 yrs in 2016</i> % of women/girls aged 15-49 in the selected areas who have experienced any forms of violence in the past 12 months <i>Baseline: 53% for ever-married women, BDHS 2007</i> 	<ul style="list-style-type: none"> Baseline and Endline Surveys 	<ul style="list-style-type: none"> Political instability Natural disaster 	MoWCA MoLJPA MoHFW DGHS DWA	UNFPA: RR - \$6M OR (funded) - \$5M UNHCR: RR - \$4M UNICEF: OR (funded) - \$40M OR (unfunded) - \$2.5M UN WOMEN: OR (unfunded) - \$1.5M WHO: RR - \$0.375 OR (funded) - \$0.075

	<i>Target: Reduced by half by 2016 in selected areas</i>				OR (unfunded) - \$0.25 IOM: OR (funded) - \$0.1M OR (unfunded) - \$0.4M
Output 2.1 Boys, men, girls, and women have increased awareness and display positive attitudes towards reducing/eliminating GBV	<ul style="list-style-type: none"> % of boys aged 10-19, men aged 20-60, girls aged 10-19 and women aged 20-49 in the selected areas who are aware of the negative effects of GBV. <i>Baseline: TBD Target: At-least 40% in 2016</i> 	<ul style="list-style-type: none"> Baseline and Endline surveys 	<ul style="list-style-type: none"> Government's willingness to partner with Civil Societies (CBOs, NGOs) in awareness raising/community mobilization efforts 	NGOs CBOs MenEngage Network DWA MoWCA	UNFPA: RR - \$1.5M OR (funded) - \$1M UN WOMEN: OR (unfunded): - \$0.5M UNHCR: RR - \$1M IOM: OR (funded) - \$0.1M OR (unfunded) - \$0.4M
Output 2.2 Decision-makers benefit from strengthened government systems to generate and validate new and existing data on GBV from different sources for planning, implementation and monitoring	<ul style="list-style-type: none"> National data base on VAW established and functional <i>Baseline: No Target: Yes</i> 	<ul style="list-style-type: none"> Hosting institution of national data base (BBS??), SGIB report 		BBS Ministry of Planning MoWCA DWA	UNFPA: RR - \$1.5M OR (funded) - \$1M WHO: RR - \$0.175M OR (funded) - \$0.075M OR (unfunded) - \$0.25M
Output 2.3 Policy makers and CSOs have increased capacity to align and implement the existing laws and policies with international frameworks on women's rights (e.g CEDAW, CRC and BPfA)	<ul style="list-style-type: none"> No. of revised policies approved to align and comply with international frameworks on women's rights <i>Baseline: - Target: 2</i> 	<ul style="list-style-type: none"> MLJPA, Ministry of Labour & Employment 	<ul style="list-style-type: none"> Governments political commitment remains favorable 	CSOs Women Organizations Planning Commission MoWCA	UNFPA: RR - \$1.5M OR (funded) - \$1M UN WOMEN: OR (unfunded) - \$1M
Output 2.4 Survivors of VAW have increased access to shelter, medical, psychological, legal support and vocational training	<ul style="list-style-type: none"> No. of women support centers or shelters which provide services for survivors of VAW established and functional in the selected districts. <i>Baseline: 7 [DWA, 2010] Target: 17 [2016]</i> 	<ul style="list-style-type: none"> MoWCA and MoSW annual report MoHFW APPR 	<ul style="list-style-type: none"> Govt. commitment to women and children rights Consensus with in and out side govt. for the respective sector Government's willingness to collaborate with civil society in service provision 	MoHFW MoLJPA District Administration MoWCA DWA NGOs Legal Aid organizations	UNFPA: RR - \$1.5M OR (funded) - \$2M UNICEF: OR (funded) - \$40M OR (unfunded) - \$2.5M UNHCR: RR - \$3M WHO: RR - \$0.2M

Annex II: Glossary

ACF - Action Contre La Faim

APPR - Annual Programme Progress Report

ARH - Adolescent Reproductive Health

ASF - Acid Survivors Foundation

BAB - Bangladesh Accreditation Board

BAIRA - Bangladesh Association of International Recruiting Agencies

BANBEIS - Bangladesh Bureau of Educational Information and Statistics

BBS - Bangladesh Bureau of Statistics

BCIP - Bangladesh Country Investment Plan

BEF - Bangladesh Employers' Federation

BGMEA - Bangladesh Garment Manufacturers and Exporters Association

BMET - Bureau of Manpower Employment and Training

BNFE - Bureau of Non-Formal Education

BNWLA - Bangladesh National Women Lawyers Association

BPFA - Beijing Declaration and Platform for Action

BRAC - Bangladesh Rural Advancement Committee

BSA - Bangladesh Students Association

BSS - Behavioral Surveillance Survey

BSTI - Bangladesh Standard and Testing Institute

BTEB - Bangladesh Technical Education Board

CAMPE - Campaign for Popular Education

CCA - Common Country Assessment

CDI - Composite Deprivation Index

CDMP - Comprehensive Disaster management Programme

CEDAW - Convention on the Elimination of All Forms of Discrimination against Women

CHT - Chittagong Hill Tracts

CHTDB - Chittagong Hill Tracts Development Board

CIP - Country Investment Plan

CMES - Centre for Mass Education in Science

CODEC - Community Development Center

CRC - Convention on the Rights of the Child

CSOs - Civil Society Organizations

CWBMP - Coastal and Wetland Biodiversity Management Plan

DGFP - Directorate General of Family Planning

DGHS - Directorate General of Health Services

DHS - Demographic Health Survey

DNC - Department of Drug and Narcotics Control

DoE - Department of Environment

DoF - Department of Forest

DPE - Department of Primary Education

DPHE - Department of Public Health Engineering
DPP - Development Project Proposal
DPs – Development Partners
DRR - Disaster Risk Reduction
DSHE - Directorate of Secondary & Higher Education
DSK - Dushtha Shasthya Kendra
DTE - Directorate of Technical Education
DYD - Department of Youth Development
EFA - Education For All
EMIS –Education Management Information System
EmONC - Emergency Obstetric and New born Care
EPI - Expanded Programme of Immunization
ERD - Economic Relations Division
ExCom – Executive Committee
FANTA - Food and Nutrition Technical Assistance
FAO - Food and Agriculture Organization
FDI – Foreign Direct Investment
FFS - Farmer field schools
FP – Family Planning
GASP - Global Agriculture and Food Security Programme
GED - General Economics Division
GoB - Government of Bangladesh
HDCs - Hill District Councils
HIES - Household Income and Expenditure Survey
HIV/AIDS - Human Immunodeficiency Virus/ Acquired Immunodeficiency Syndrome
HKI - Helen Keller International
HMIS - Health Management Information System
IAEA - International Atomic Energy Agency
IAF - International Accreditation forum
IASC – Inter Agency Steering Committee
ICDDRDB - International Centre for Diarrhoeal Disease Research, Bangladesh
ICT - Information Communications Technology
IDCOL - Infrastructure Development Company Limited
IEC – International Electrotechnical Commission
IFAD - International Fund for Agricultural Development
ILO - International Labour Organization
IOM - International Organization for Migration
IPHN - Institute of Public Health and Nutrition
IRA- Insurance Regulatory Authority
ISO - International Organization for Standardization
JCS – Joint Cooperation Strategy
LCG - Local Consultative Group

LED- Local Economic Development
LETI - Legal Education and Training Institute
LFS- Labour Force Survey
LGED - Local Government Engineering Division
LGIs – Local Government Institutions
LLP - Local Level Planning
M&E - Monitoring and Evaluation
MARA - Most at Risk Adolescents
MARPs – Most at Risk Populations
MCWC – Maternal and Child Welfare Center
MDG - Millennium Development Goal(s)
MFIs – Micro Finance Institutions
MICS - Multiple Indicator Cluster Survey
MJT – Ministry of Jute and Textile
MNCH - Maternal, Neonatal and Child Health
MoA - Ministry of Agriculture
MoCA - Ministry of Cultural Affairs
MoCHTA - Ministry of Chittagong Hills Tracts Affairs
MoCWA - Ministry of Women and Children's Affairs
MoE - Ministry of Education
MoEF - Ministry of Environment and Forests
MoEWOE - Ministry of Expatriates Welfare and Overseas Employment
MOFA- Ministry of Foreign Affairs
MoFDM - Ministry of Food and Disaster Management
MoFL - Ministry of Fisheries & Livestock
MoH&PW - Ministry of Housing and Public Works
MoHA – Ministry of Home Affairs
MOHFW - Ministry of Health and Family Welfare
Mol- Ministry of Information
MoJT - Ministry of Textiles and Jute
MOL - Ministry of Land
MoLE - Ministry of Labour and Employment
MoLGRD&C - Ministry of Local Government Rural Development and Cooperatives
MoLJPA - Ministry of Law, Justice and Parliamentary Affairs
MoPME - Ministry of Primary and Mass Education
MORA - Ministry of Religious Affairs
MoSW - Ministry of Social Welfare
MoWCA - Ministry of Women and Children's Affairs
MoYS - Ministry of Youth and Sports
MP – Member of Parliament
MSF - Médecins Sans Frontières
MSMEs - Micro, Small and Medium Enterprises

MWOCA - Ministry of Women and Children Affairs
NASP - National AIDS and STD Programme
NDSC - National Disease Surveillance Centre
NFPCSP - National Food Policy Capacity Strengthening Programme
NFPPOA - National Food Policy Plan of Action
NGO - Non-Governmental Organization
NILG - National Institute of Local Government
NSAPR-II - The National Strategy for Accelerated Poverty Reduction-2
NSP III - Nutrition Surveillance Project 3
OHCHR - Office of the High Commissioner for Human Rights
OMT – Operations Managers Team
OR – Other Resources
OST - Oral Drug Substitution Therapy
PKSF - Palli Karma-Sahayak Foundation
PLHIVs – People Living with HIV
PMT – Programme Management Team
RCO – Resident Coordinators Office
REDD - Reducing Emissions from Deforestation and Forest Degradation
REOPA - Rural Employment Opportunities for Public Assets
RR – Regular Resources
SDPs – Service Delivery Points
SGBV - Sexual and Gender-Based Violence
SMART - Specific, Measurable, Achievable, Relevant and Time-bound
SME - Small Micro and Medium Enterprise
SVRS - Sample Vital Registration System
SWAPs - Sector-Wide Approach
TPP – Technical Project Performa
TUs – Trade Unions
TVET - Technical and Vocational Education and Training
UGC - University Grants Commission
UN - United Nations
UNAIDS - United Nations Programme on HIV/AIDS
UNCDF - United Nations Capital Development Fund
UNCT - UN Country Team
UNCTAD - United Nations Conference on Trade and Development
UNDAF - United Nations Development Assistance Framework
UNDP - United Nations Development Programme
UNEP - United Nations Environment Programme
UNESCO - United Nations Educational, Scientific and Cultural Organization
UNFPA - United Nations Population Fund
UNGASS - United Nations General Assembly Special Session
UNHABITAT - United Nations Centre for Human Settlements

UNHCR - United Nations High Commission for Refugees
UNICEF - United Nations Children's Fund
UNIDO - United Nations Industrial Development Organization
UNJT – UN Joint Team
UNODC - United Nations Office on Drugs and Crime
UNOHCHR - United Nations Office of the High Commissioner for Human Rights
UNOPS - United Nations Office for Project Services
UPHC - Urban Primary Health Care
UPPR - Urban Partnerships for Poverty Reduction Project
UZP – Upazilla Parishad
VAW - Violence Against Women
VAM – Vulnerability Analysis Mapping
WASH - Water and Sanitation Hygiene
WFP - World Food Programme
WHO - World Health Organization